

# Technical Manual

# JBL2142H

## SPECIFICATIONS



### ACOUSTIC & ELECTRICAL SPECIFICATIONS:

- Nominal Impedance: 8 ohm
- Power Rating: 90W Continuous Pink Noise
- Frequency Range: 60 Hz to 22 kHz (-10dB)
- Sensitivity: 97 dB SPL\*
- Crossover Frequencies: 2.7 kHz

### SYSTEM COMPONENTS:

- Cabinet: N/A
- Grille: N/A
- Low Frequency Transducer: 300mm (12 in.) Co-axial Transducer
- DC Resistance: 5.0 ohm ±10% Copper Wire

\*1 Watt (2.83 V RMS) @ 1 Meter

### SYSTEM COMPONENTS: (cont'd)

- High Frequency Transducer: 50mm (1.95 in.) Pure Titanium Diaphragm Transducer (0175Ti)
- DC Resistance: 3.6 ohm ±10% Copper Wire
- Crossover Network: N2142H (71741)

### AURAL SWEEP TEST SPECIFICATIONS:

- A. System Aural Sweep Test: 7.0V Input, 20 Hz to 20 kHz
- B. L.F. Aural Sweep Test: 6.0V Input, 20 Hz to 1.2 kHz
- C. H.F. Aural Sweep Test: 2.0V Input, 2.0 kHz to 20 kHz

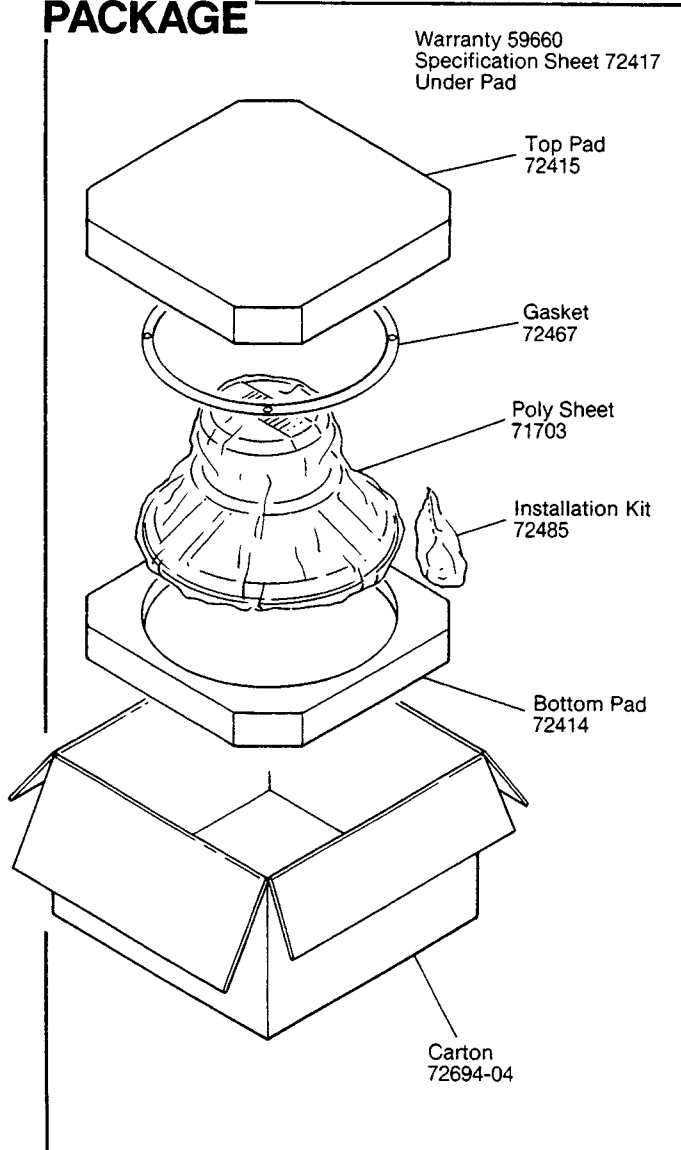
### PHYSICAL SPECIFICATIONS:

- Enclosure Dimensions: 311mm x 323mm x 176mm (12.25 x 12.75 x 6.93 in. D)
- Shipping Weight: 13.5 lbs. (6.2 kg)

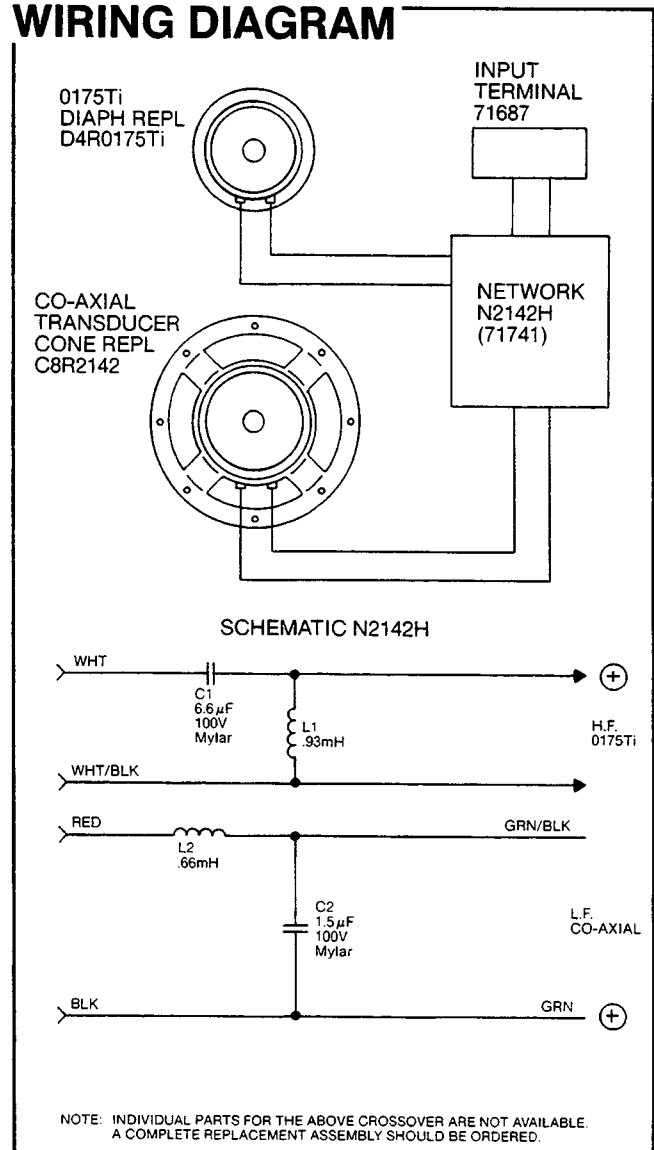
### WARRANTY INFORMATION:

- Refer to the Warranty Statement packed with each product.

## PACKAGE



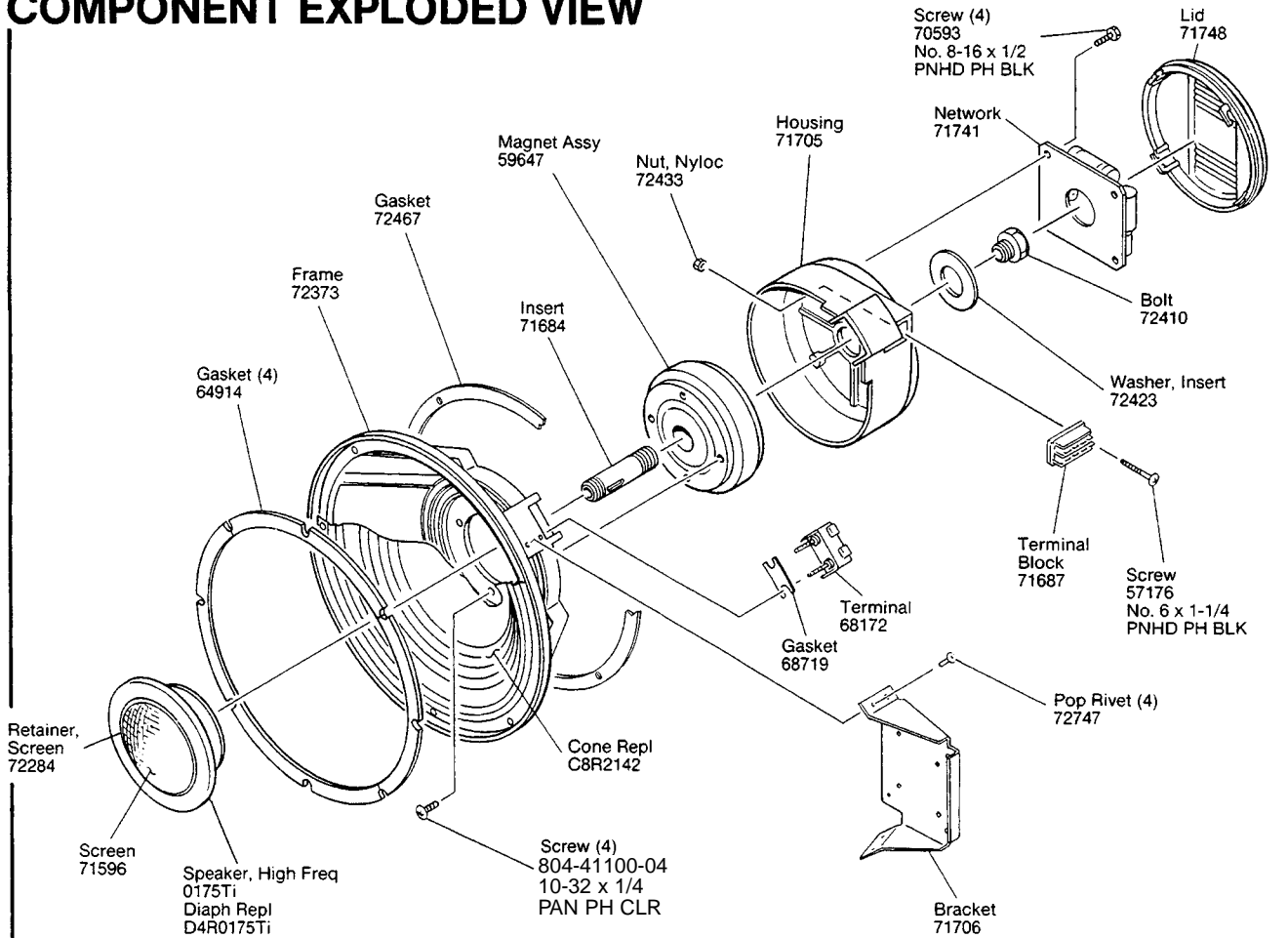
## WIRING DIAGRAM



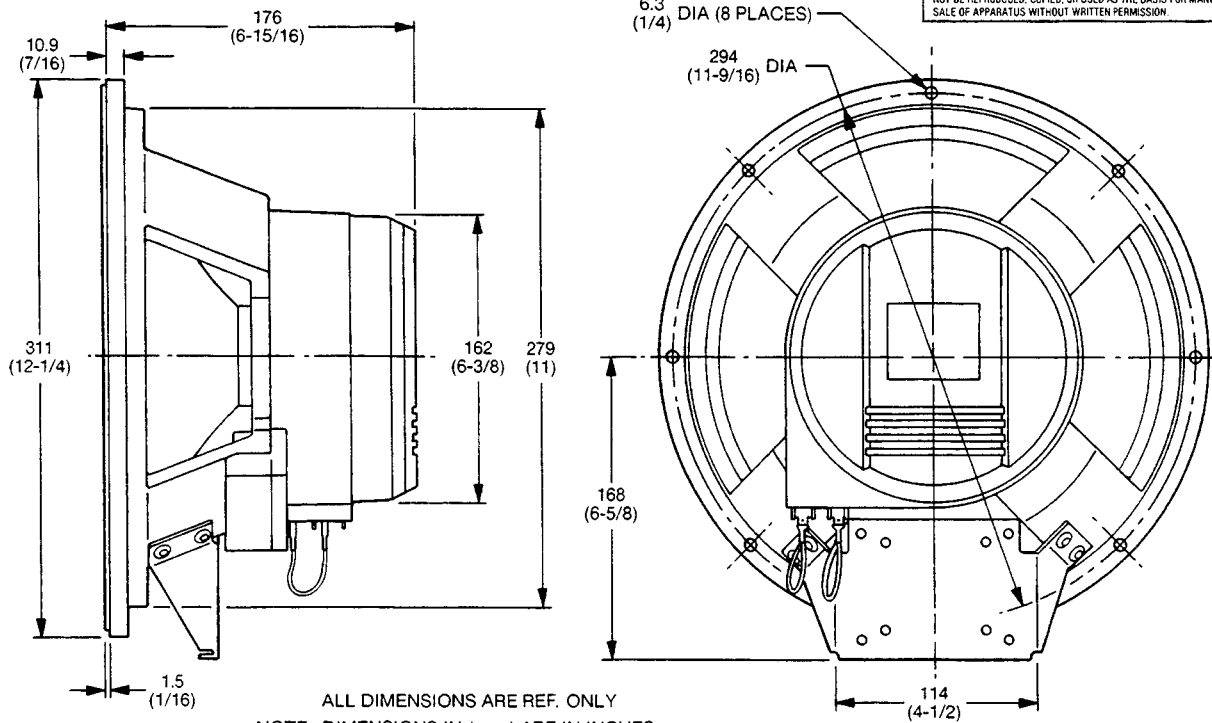
JBL2142H REV E

# JBL2142H

## COMPONENT EXPLODED VIEW



## MECHANICAL DRAWING



JBL2142H