

# Technical Manual

# JBL2426H/J

## SPECIFICATIONS



### ACOUSTIC & ELECTRICAL SPECIFICATIONS:

- Nominal Impedance: 8 ohm (H) / 16 ohm (J)
- Power Capacity: 70W Continuous Program Above 800 Hz  
100W Continuous Program Above 1.2 kHz
- Frequency Range: 500 Hz to 20 kHz
- Sensitivity: 110 dB SPL\* - On-Axis On Horn<sup>2</sup>  
117 dB SPL\* - On Plane Wave Tube<sup>3</sup>
- Crossover Frequencies: 800 Hz or Higher

### SYSTEM COMPONENTS:

- Cabinet: N/A
- Grille: N/A
- High Frequency Transducer: 44mm (1-3/4 in.) Pure Titanium Diaphragm Compression Driver (2426H/J)
- DC Resistance: 3.2 ohm ±8% Aluminum Wire (H)  
6.25 ohm ±8% Aluminum Wire (J)

### AURAL SWEEP TEST SPECIFICATIONS:

- A. H.F. Aural Sweep Test: 2.83V Input, 550 Hz to 20 kHz

### PHYSICAL SPECIFICATIONS:

- Enclosure Dimensions: 149mm x 149mm x 104mm D  
(5.875 x 5.875 x 4.12 in. D)
- Shipping Weight: 10 lbs. (4.5 kg.)

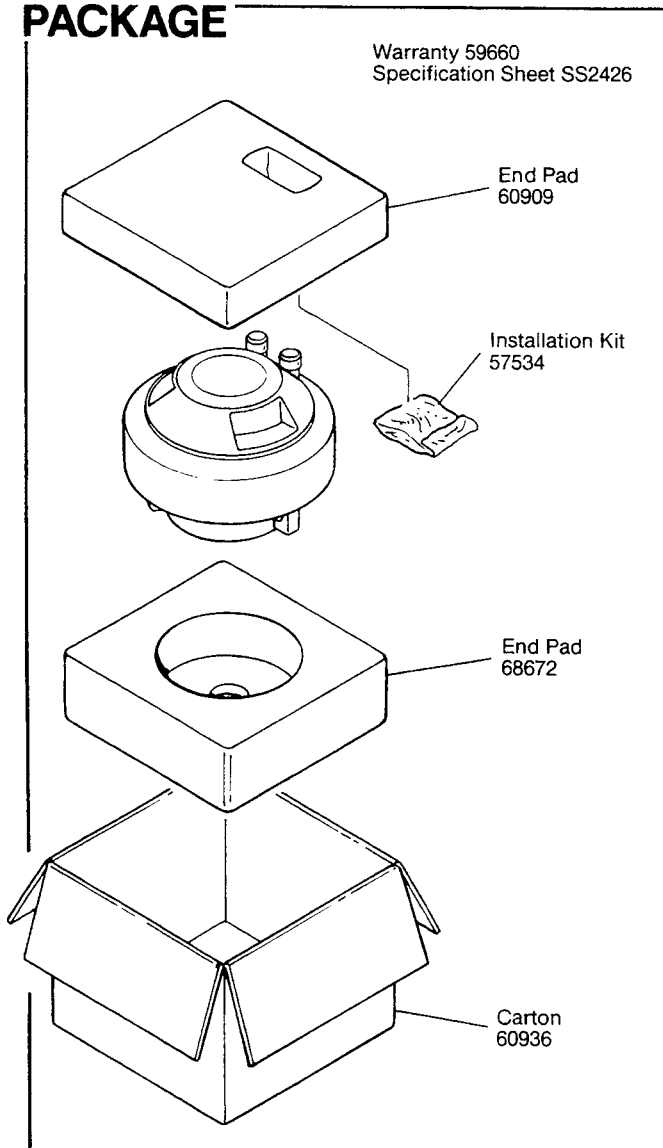
### WARRANTY INFORMATION:

- Refer to the Warranty Statement packed with each product.

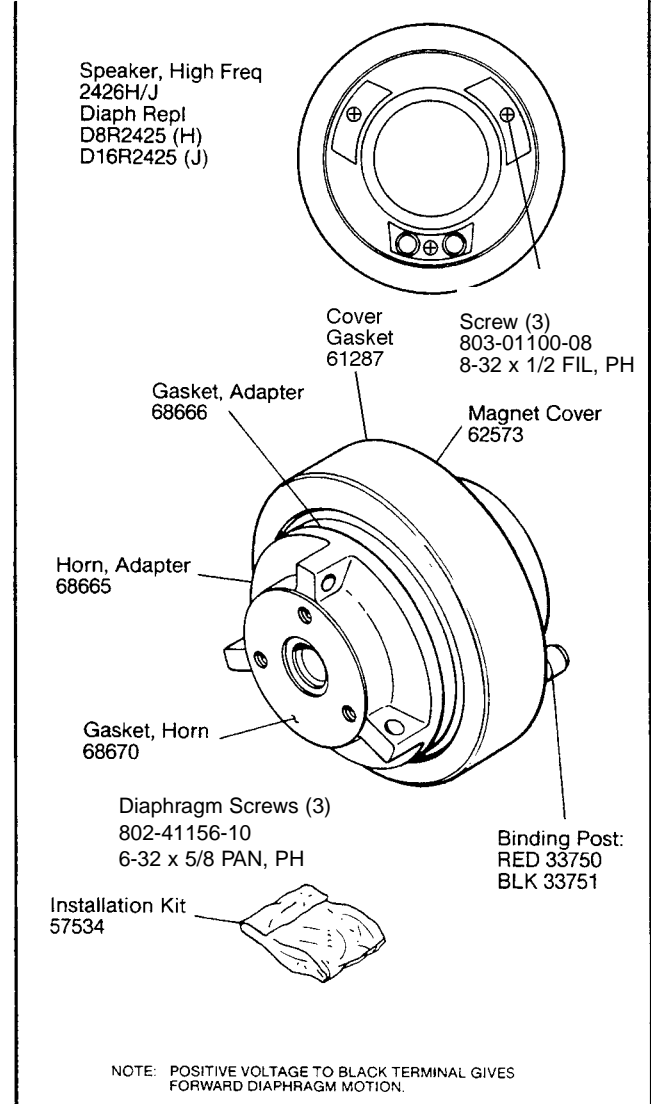
\*1 Watt (2.83 V RMS) @ 1 Meter (H)

\*1 Watt (4.0 V RMS) @ 1 Meter (J)

## PACKAGE



## COMPONENT VIEW

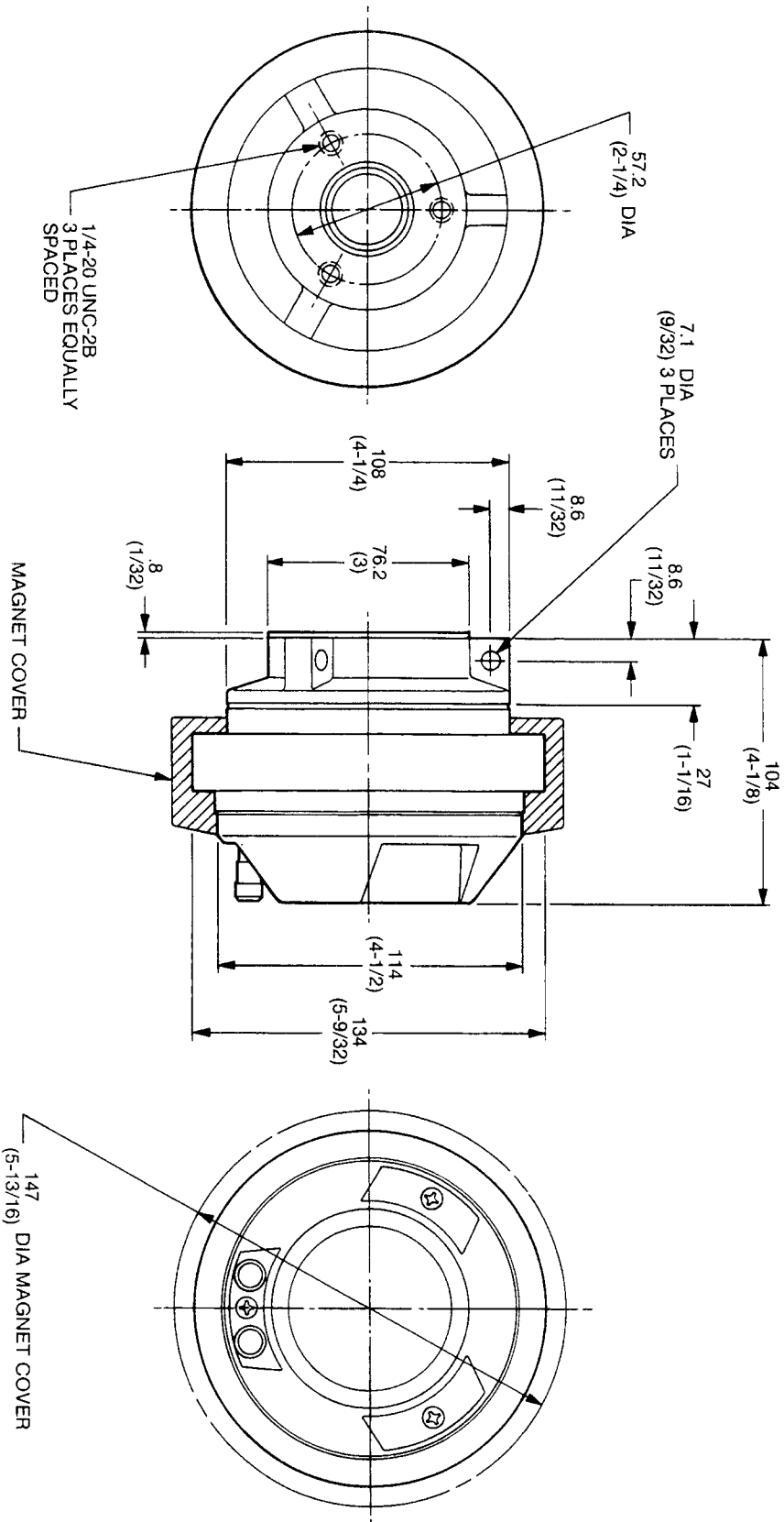


JBL 2426H/J REVE

# JBL 2426H/J

## MECHANICAL DRAWING

THESE DRAWINGS AND SPECIFICATIONS ARE THE PROPERTY OF JBL INCORPORATED. THEY ARE ISSUED IN STRICT CONFIDENCE AND SHALL NOT BE REPRODUCED, COPIED, OR USED AS THE BASIS FOR MANUFACTURE OR SALE OF APPARATUS WITHOUT WRITTEN PERMISSION.



ALL DIMENSIONS ARE REF. ONLY  
NOTE: DIMENSIONS IN ( ) ARE IN INCHES

JBL 2426H/J