

Technical Manual

JBL2446H/J

SPECIFICATIONS



ACOUSTIC & ELECTRICAL SPECIFICATIONS:

- Nominal Impedance: 8 ohm (H), 16 ohm (J)
- Power Capacity: 100W Continuous Program Above 500 Hz
150W Continuous Program Above 1 kHz
500 Hz to 20 kHz
- Frequency Range: 500 Hz to 20 kHz
- Sensitivity: 111 dB SPL* On-Axis On Horn
118 dB SPL* on Plane-Wave Tube
- Crossover Frequencies: 500 Hz or Higher

SYSTEM COMPONENTS:

- Cabinet: N/A
- Grille: N/A
- High Frequency Transducer: 100mm (4 in.) Pure Titanium Diaphragm (2446H/J)
- DC Resistance: 4.1 ohm \pm 8% Aluminum Wire (H)
8.0 ohm \pm 8% Aluminum Wire (J)

AURAL SWEEP TEST SPECIFICATIONS:

- HF Aural Sweep Test: 2.83V Input, 500 Hz to 1.2 kHz (H)
2.83V Input, 500 Hz to 1.2 kHz (J)

PHYSICAL SPECIFICATIONS:

- Enclosure Dimensions: 235mm DIA x 131mm D
(9.25 DIA x 5.18 in. D)
- Shipping Weight: 32 lbs. (14.5 kg.)

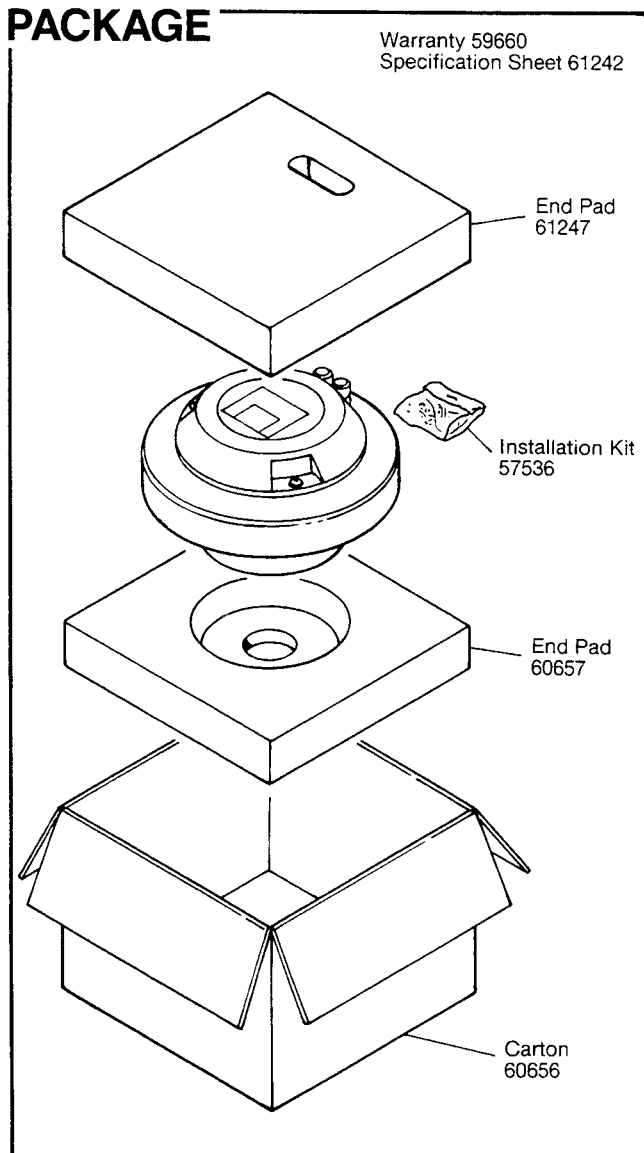
WARRANTY INFORMATION:

- Refer to the Warranty Statement packed with each product.

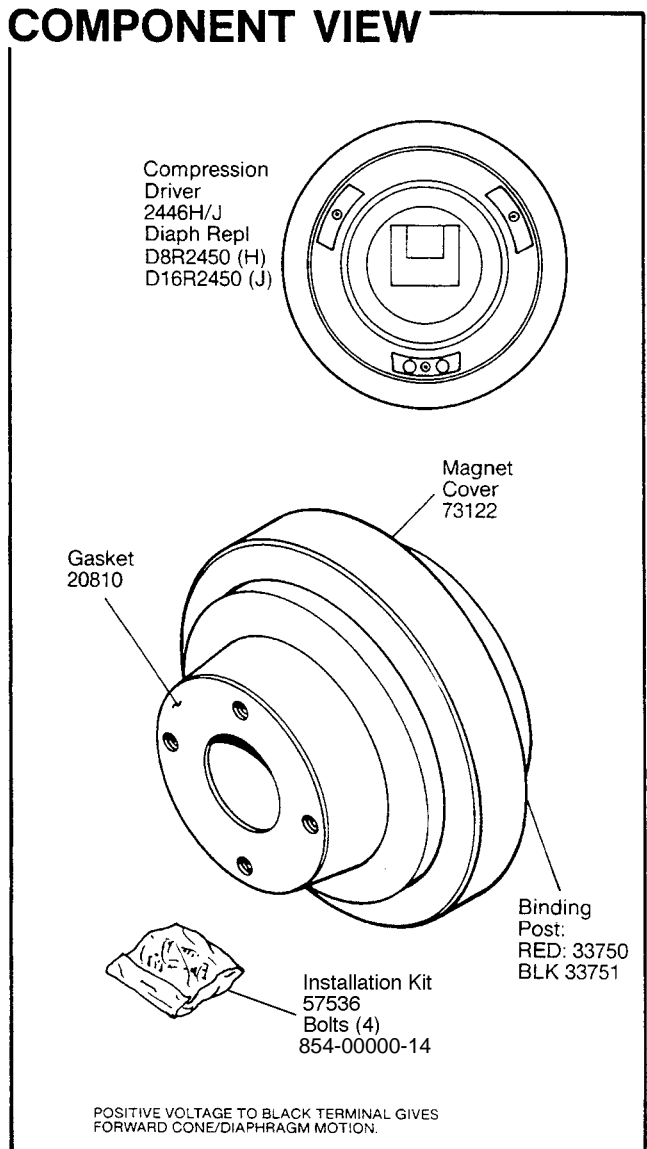
*1 Watt (2.83 V RMS) @ 1 Meter (H)

*1 Watt (4.0 V RMS) @ 1 Meter (J)

PACKAGE



COMPONENT VIEW

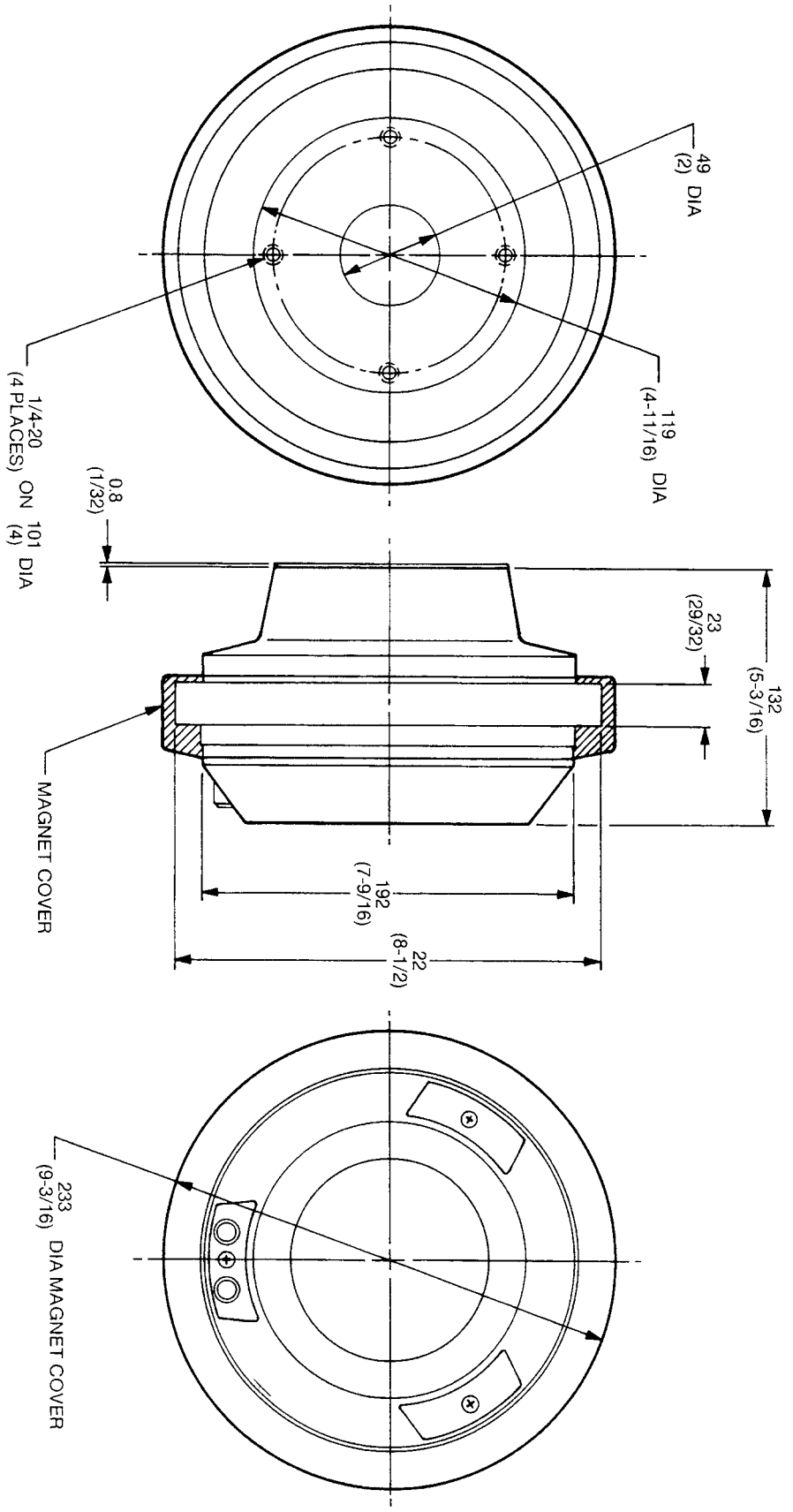


JBL2446H/J REV E

JBL2446H/J

MECHANICAL DRAWING

THESE DRAWINGS AND SPECIFICATIONS ARE THE PROPERTY OF JBL INCORPORATED. THEY ARE ISSUED IN STRICT CONFIDENCE AND SHALL NOT BE REPRODUCED, COPIED, OR USED AS THE BASIS FOR MANUFACTURE OR SALE OF APPARATUS WITHOUT WRITTEN PERMISSION.



ALL DIMENSIONS ARE REF. ONLY
NOTE: DIMENSIONS IN () ARE IN INCHES

JBL2446H/J