

Technical Manual

JBL2447H/J

SPECIFICATIONS



ACOUSTIC & ELECTRICAL SPECIFICATIONS:

- Nominal Impedance: 8 ohm (H), 16 ohm (J)
- Power Capacity: 100W Continuous Program Above 500 Hz
150W Continuous Program Above 1 kHz
500 Hz to 20 kHz
- Frequency Range: 500 Hz to 20 kHz
- Sensitivity: 111 dB SPL*, 1W @ 1m On-Axis On Horn
118 dB SPL*, 1mW On Plane Wave Tube
- Crossover Frequencies: N/A

SYSTEM COMPONENTS:

- Cabinet: N/A
- Grille: N/A

*1 Watt (2.83 V RMS) @ 1 Meter (H)

*1 Watt (4.0 V RMS) @ 1 Meter (J)

SYSTEM COMPONENTS: (cont'd)

- High Frequency Transducer: 38mm (1-1/2 in. Exit) Pure Titanium Diaphragm (2447H/J)
- DC Resistance: 4.1 ohm ±8% Aluminum Wire (H)
8.0 ohm ±8% Aluminum Wire (J)

AURAL SWEEP TEST SPECIFICATIONS:

- H.F. Aural Sweep Test: 2.83V Input, 100 Hz to 1.0 kHz (H)
4.0V Input, 100 Hz to 1.0 kHz (J)

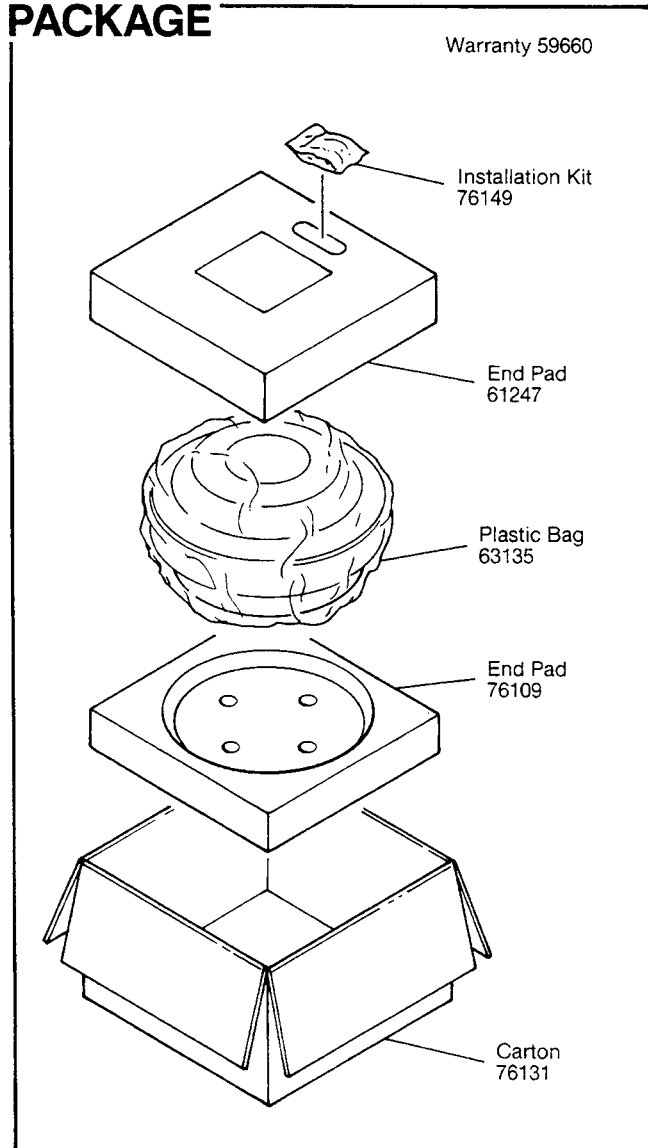
PHYSICAL SPECIFICATIONS:

- Dimensions: 235mm DIA x 92mm D
(9.25 DIA x 3.62 in. D)
- Shipping Weight: 23.5 lbs. (10.7 kg.)

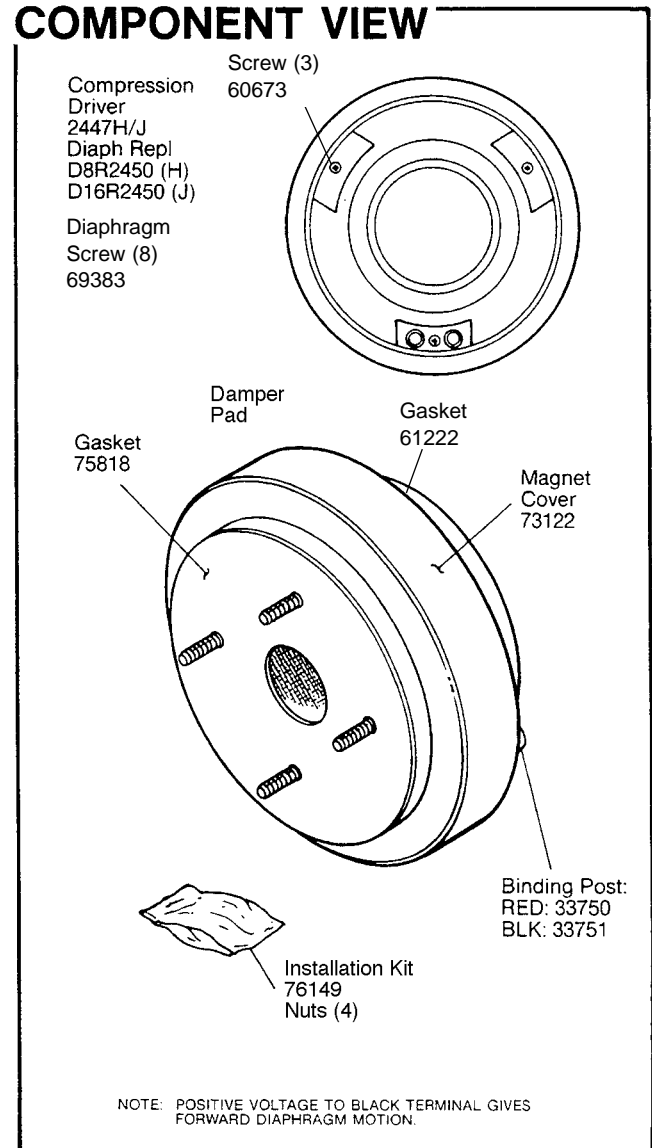
WARRANTY INFORMATION:

- Refer to the Warranty Statement packed with each product.

PACKAGE



COMPONENT VIEW

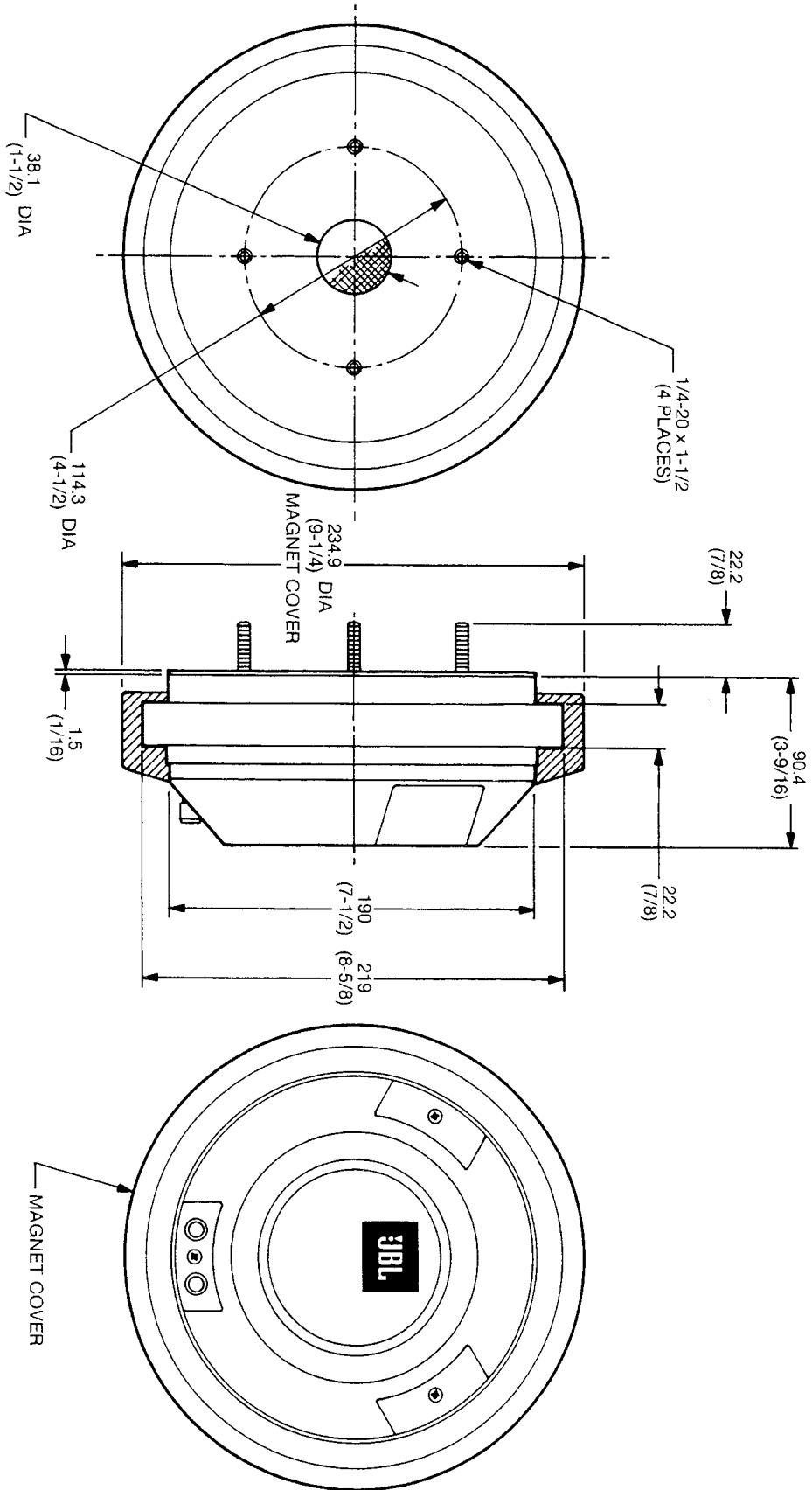


JBL2447H/J REV C

JBL2447H/J

MECHANICAL DRAWING

THESE DRAWINGS AND SPECIFICATIONS ARE THE PROPERTY OF JBL INCORPORATED. THEY ARE ISSUED IN STRICT CONFIDENCE AND SHALL NOT BE REPRODUCED, COPIED, OR USED AS THE BASIS FOR MANUFACTURE OR SALE OF ANY PARTS WITHOUT WRITTEN PERMISSION.



ALL DIMENSIONS ARE REF. ONLY
NOTE: DIMENSIONS IN () ARE IN INCHES

JBL2447H/J