

# Technical Manual

# JBL2450H/J

## SPECIFICATIONS



### ACOUSTIC & ELECTRICAL SPECIFICATIONS:

- Nominal Impedance: 8 ohm (H), 16 ohm (J)
- Power Capacity: 100W Continuous Program Above 500 Hz  
150W Continuous Program Above 1 kHz  
500 Hz to 20 kHz
- Frequency Range: 500 Hz to 20 kHz
- Sensitivity: 111 dB SPL\*, 1W @ 1m On-Axis On Horn  
118 dB SPL\*, 1mW On Plane Wave Tube
- Crossover Frequencies: N/A

### SYSTEM COMPONENTS:

- Cabinet: N/A
- Grille: N/A

\*1 Watt (2.83 V RMS) @ 1 Meter (H)

\*1 Watt (4.0 V RMS) @ 1 Meter (J)

### SYSTEM COMPONENTS: (cont'd)

- High Frequency Transducer: 49mm (2.0 in. Exit) Pure Titanium Diaphragm (2450H/J)
- DC Resistance: 4.1 ohm  $\pm$ 8% Aluminum Wire (H)  
8.0 ohm  $\pm$ 8% Aluminum Wire (J)

### AURAL SWEEP TEST SPECIFICATIONS:

- HF Aural Sweep Test: 2.83V Input, 550 Hz to 1.2 kHz (H)  
2.83V Input, 550 Hz to 1.2 kHz (J)

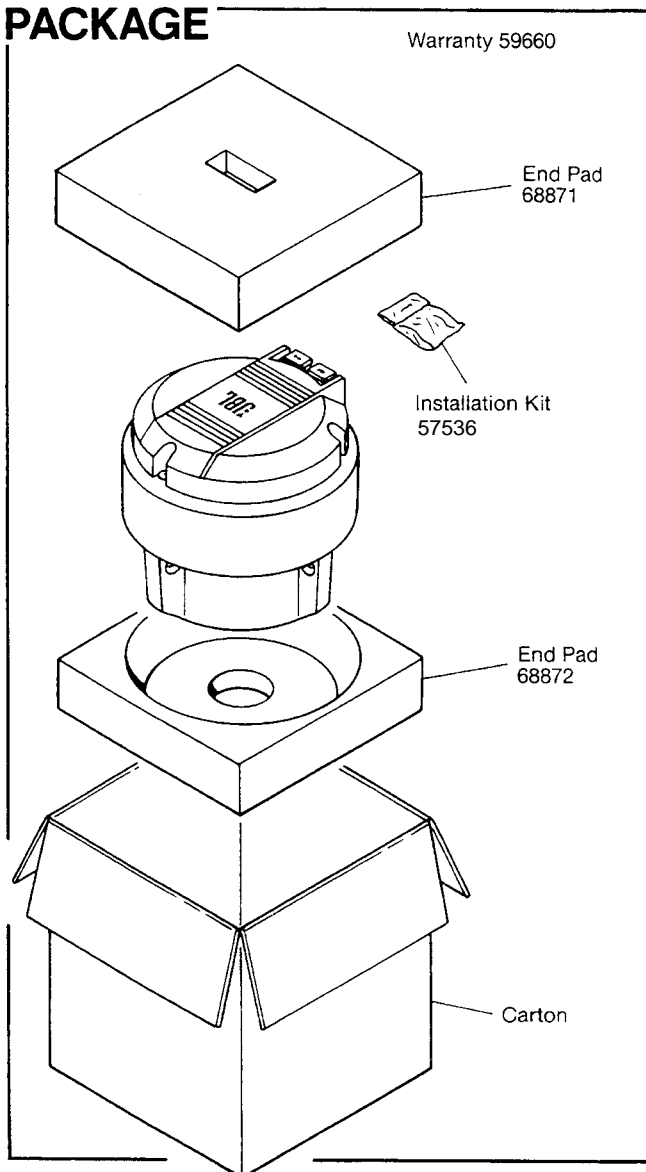
### PHYSICAL SPECIFICATIONS:

- Enclosure Dimensions: 168mm DIA x 141mm D (6.62 DIA x 5.56 in. D)
- Neodymium Magnet
- Shipping Weight: 10.5 lbs. (4.8 kg.)

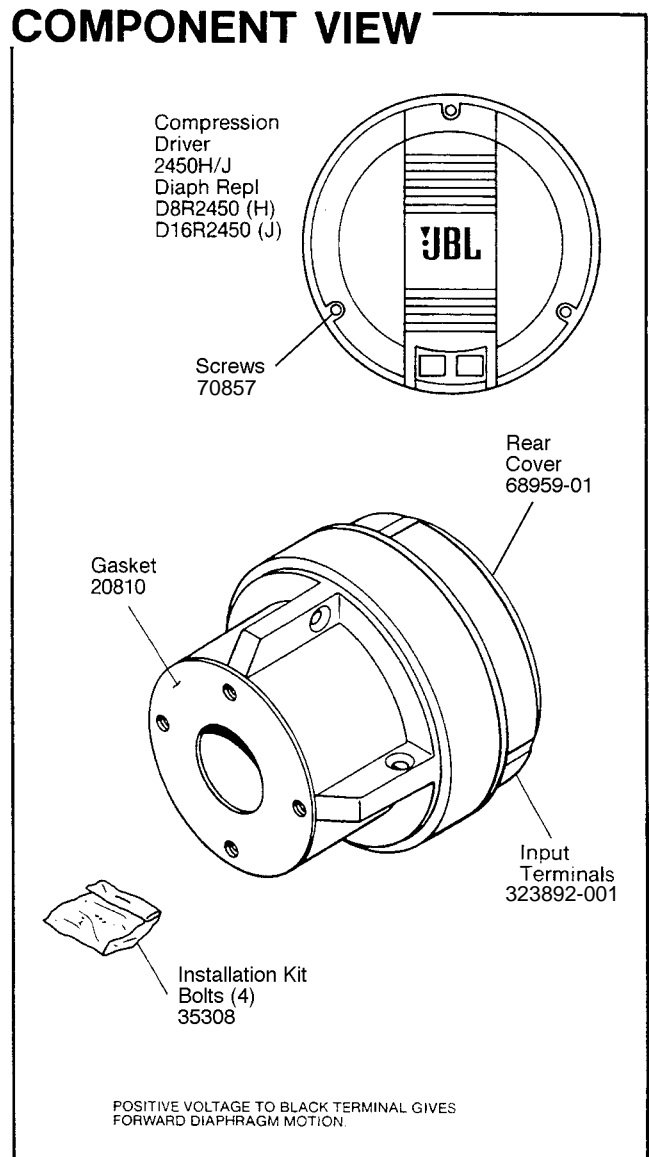
### WARRANTY INFORMATION:

- Refer to the Warranty Statement packed with each product.

## PACKAGE



## COMPONENT VIEW

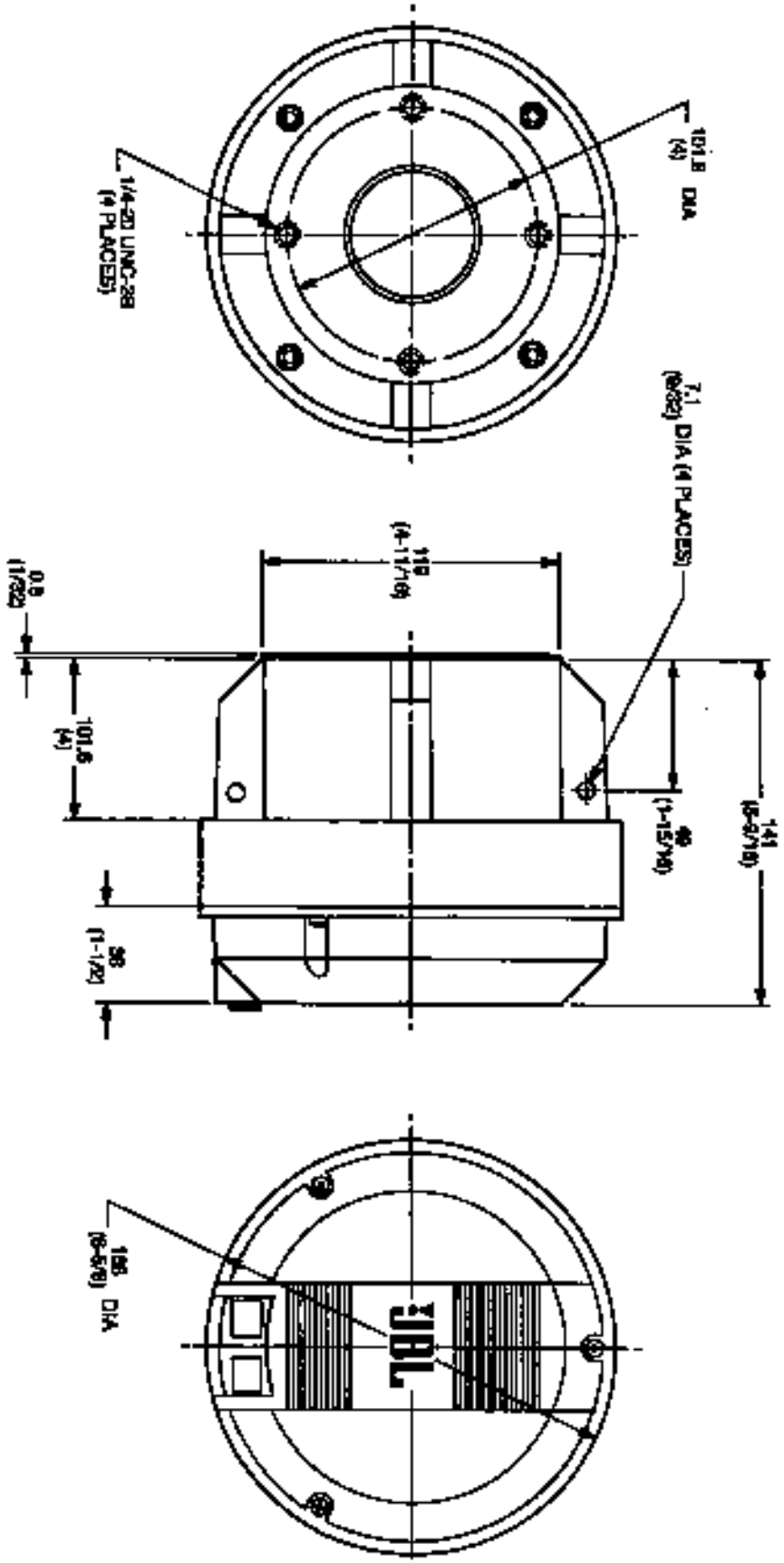


JBL2450H/J REV F

# JBL2450H/J

## MECHANICAL DRAWING

THIS DRAWING AND SPECIFICATIONS ARE THE PROPERTY OF JBL CORPORATION. ALL RIGHTS ARE RESERVED. NO PART OF THIS DRAWING OR SPECIFICATIONS MAY BE REPRODUCED OR TRANSMITTED IN ANY FORM OR BY ANY MEANS, ELECTRONIC OR MECHANICAL, INCLUDING PHOTOCOPYING, RECORDING, OR BY ANY INFORMATION STORAGE AND RETRIEVAL SYSTEM, WITHOUT PERMISSION IN WRITING FROM JBL CORPORATION.



ALL DIMENSIONS ARE PER. ONLY  
NOTE: DIMENSIONS IN ( ) ARE IN INCHES

JBL2450H/J