

# Technical Manual



# JBL506G-2S

## SPECIFICATIONS

### ACOUSTIC & ELECTRICAL SPECIFICATIONS:

- Nominal Impedance: 8 ohm
- Power Capacity: ] Not Available
- Frequency Range: ] Not Available
- Sensitivity: ] Not Available
- Crossover Frequencies: N/A

### SYSTEM COMPONENTS:

- Cabinet: N/A
- Grille: N/A
- Low Frequency Transducer: 165mm (6-1/2 in.) Cone Transducer (506G-2S)
- DC Resistance: 4.5 ohm ±5% Copper Wire

### AURAL SWEEP TEST SPECIFICATIONS:

- L.F. Aural Sweep Test: 4.0V Input, 20 Hz to 1.2 kHz

### PHYSICAL SPECIFICATIONS:

- Enclosure Dimensions: 165mm x 165mm x 3.5mm D (6.5 x 6.5 x 3.5 in. D)
- Net Weight: Not Available

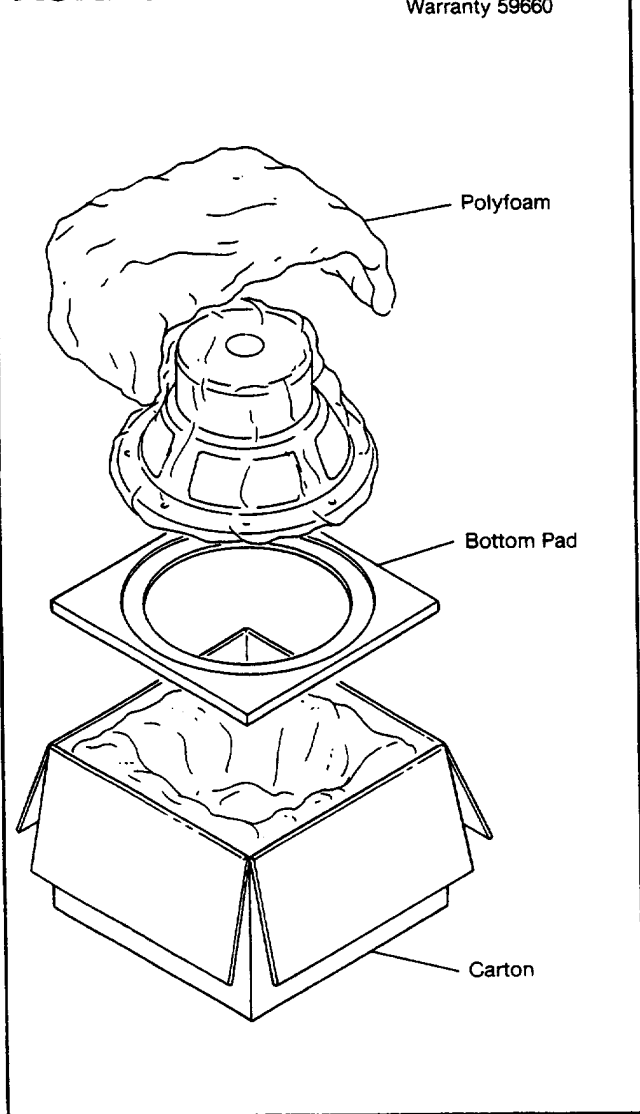
### WARRANTY INFORMATION:

- Refer to the Warranty Statement packed with each product.

\*1 Watt (2.83 V RMS) @ 1 Meter

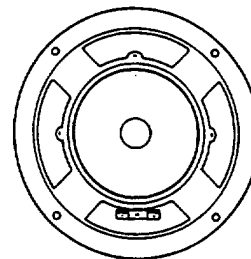
## PACKAGE

Warranty 59660

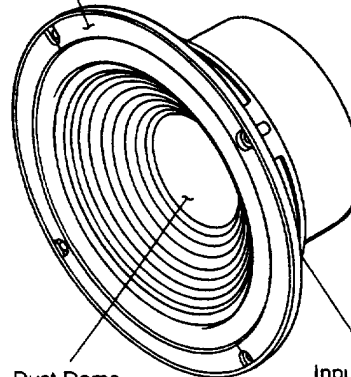


## COMPONENT VIEW

Speaker, Low Freq  
506G-2S  
(73887)



Pad Ring  
74015



Dust Dome  
69582-11

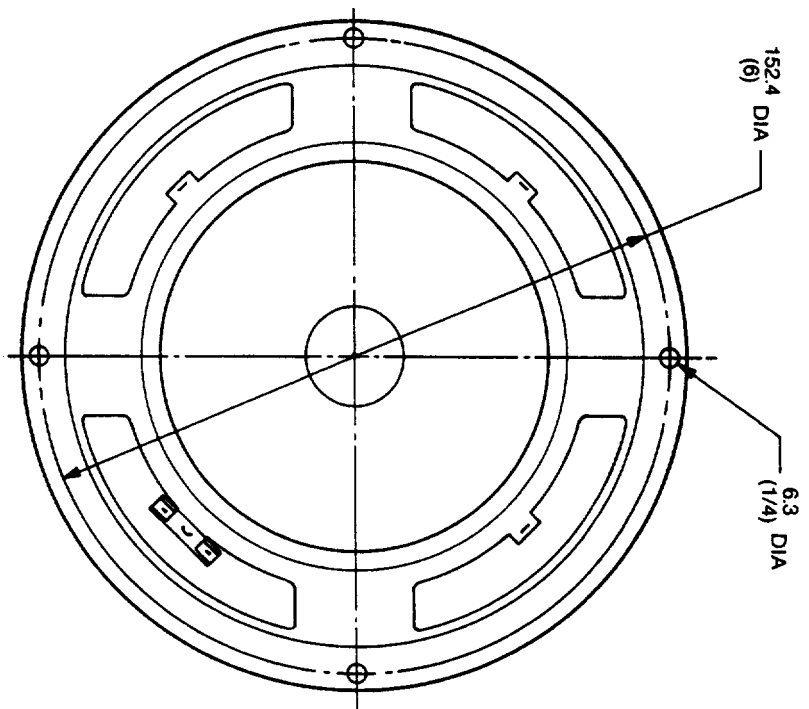
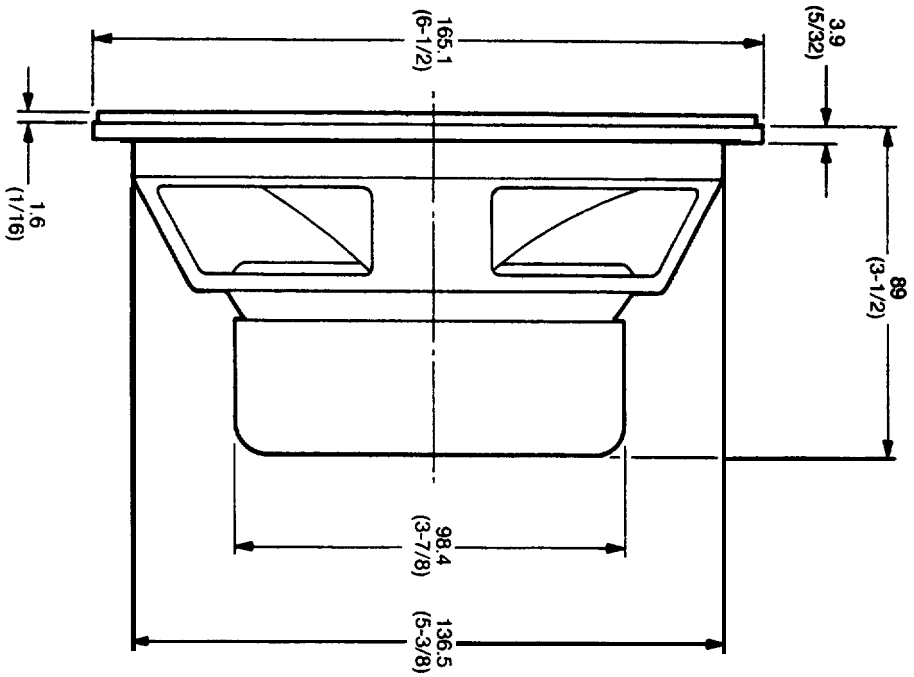
Input Terminals  
Are An Integral  
Part Of Assy

NOTE: CONE/DIAPHRAGM KIT NOT AVAILABLE. DEFECTIVE SPEAKER SHOULD BE REPLACED.

# JBL506G-2S

## MECHANICAL DRAWING

THESE DIMENSIONS AND SPECIFICATIONS ARE THE PROPERTY OF JBL INC. AND SHALL NOT BE REPRODUCED, COPIED, OR USED AS THE BASIS FOR MANUFACTURE OR SALE OF APPLICABLE WITHOUT WRITTEN PERMISSION.



ALL DIMENSIONS ARE REF. ONLY  
NOTE: DIMENSIONS IN ( ) ARE IN INCHES

JBL506G-2S