

Technical Manual

JBL E130-4, (-8, -16)



SPECIFICATIONS

ACOUSTIC & ELECTRICAL SPECIFICATIONS:

- Nominal Impedance: 4 ohm, 8 ohm, 16 ohm
- Power Capacity: 300W Continuous Program
150W Continuous Sine Wave²
- Frequency Range: 50 Hz to 6000 kHz
- Sensitivity: 105 dB SPL*
- Crossover Frequencies: N/A

SYSTEM COMPONENTS:

- Cabinet: N/A
- Grille: N/A
- Low Frequency Transducer: 380mm (15 in.) Cone Transducer (E130-4, -8, -16)
- DC Resistance: 3.2 ohm ±10% Aluminum Wire (-4)
6.3 ohm ±10% Aluminum Wire (-8)
13.0 ohm ±10% Aluminum Wire (-16)

AURAL SWEEP TEST SPECIFICATIONS:

- L.F. Aural Sweep Test: 7.0V Input, 20 Hz to 1.2 kHz (-4)
7.0V Input, 20 Hz to 1.2 kHz (-8)
14.0V Input, 20 Hz to 1.2 kHz (-16)

PHYSICAL SPECIFICATIONS:

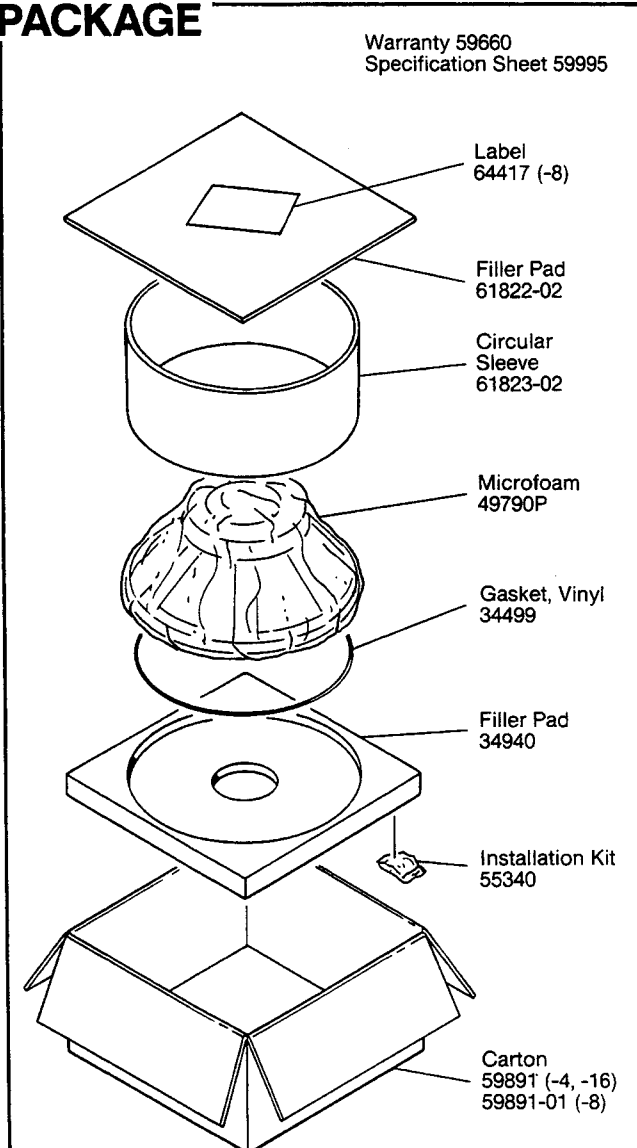
- Enclosure Dimensions: 387mm x 387mm x 137mm D
(15.25 x 15.25 x 5.38 in. D)
- Net Weight: 22-1/4 lbs. (10.1 kg.)

WARRANTY INFORMATION:

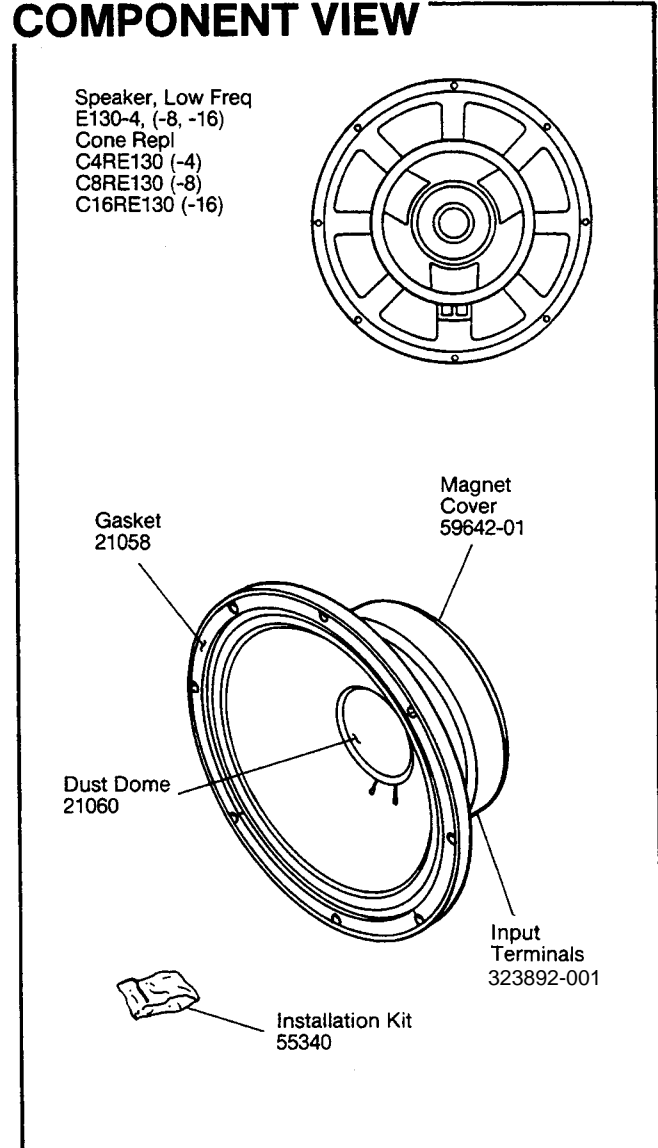
- Refer to the Warranty Statement packed with each product.

*1 Watt (2.0 V RMS) @ 1 Meter (-4)
*1 Watt (2.83 V RMS) @ 1 Meter (-8)
*1 Watt (4.0 V RMS) @ 1 Meter (-16)

PACKAGE



COMPONENT VIEW

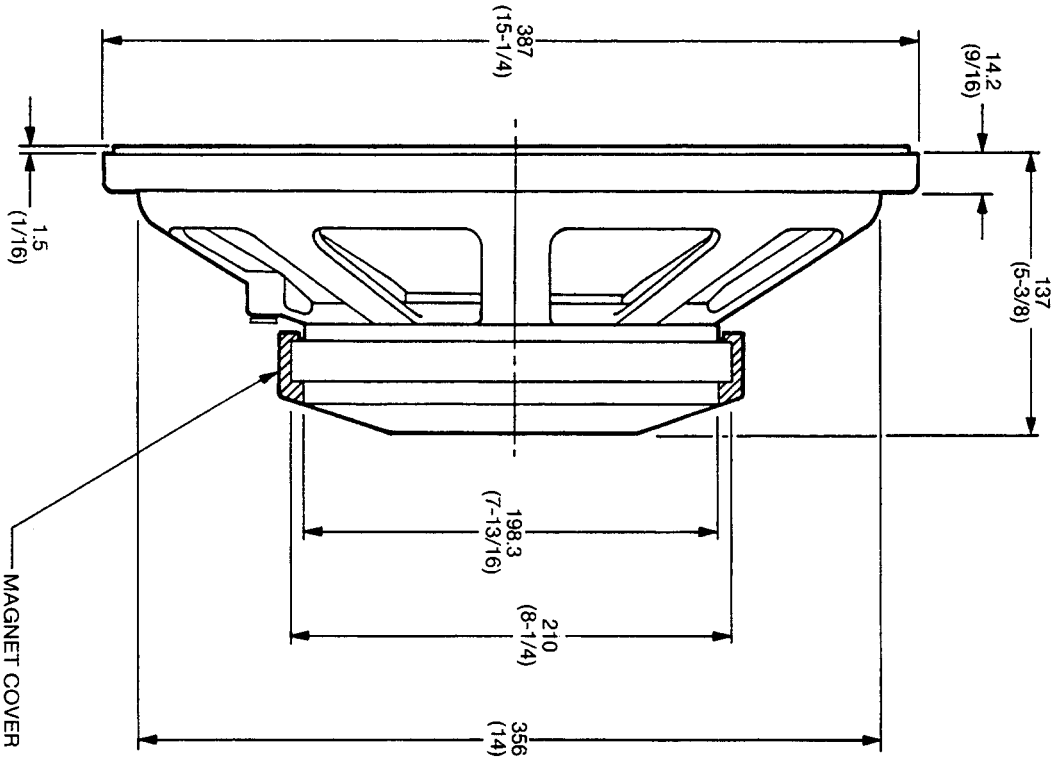


JBL E130-4 (-8, -16) REV B

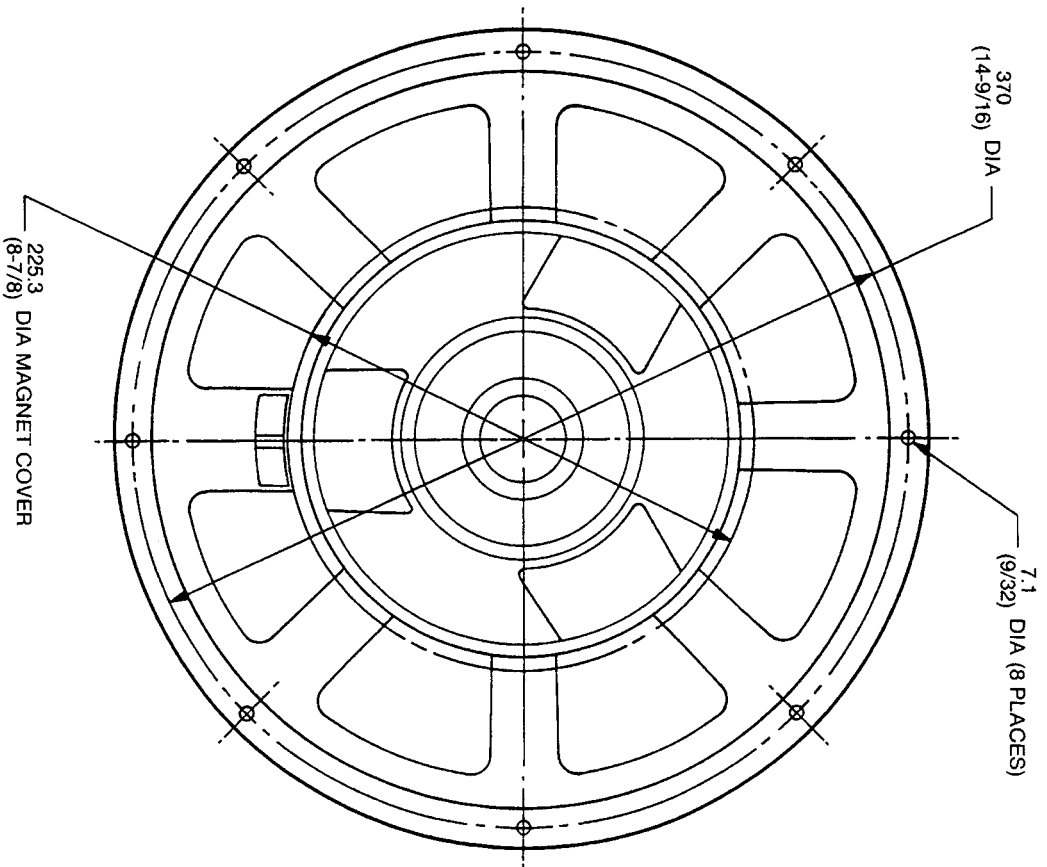
JBL E130-4, (-8, -16)

MECHANICAL DRAWING

THESE DRAWINGS AND SPECIFICATIONS ARE THE PROPERTY OF JBL. INCORPORATED. THEY ARE ISSUED IN STRICT CONFIDENCE AND SHALL NOT BE REPRODUCED, COPIED OR USED AS THE BASIS FOR MANUFACTURE OR SALE OF APPARATUS WITHOUT WRITTEN PERMISSION.



ALL DIMENSIONS ARE REF. ONLY
NOTE: DIMENSIONS IN () ARE IN INCHES



JBL E130-4, (-8, -16)