

# Technical Manual



# JBL EON305

## SPECIFICATIONS

### ACOUSTIC & ELECTRICAL SPECIFICATIONS:

- Nominal Impedance: 8 Ohms
- System Power Rating: 250W continuous, 500W program, 1000W peak
- Frequency Response: 50 Hz – 18 kHz ( $\pm 3$  dB)
- Frequency Range: 38 Hz – 20 kHz (-10 dB)
- Maximum SPL: 128 dB
- Sensitivity: 98 dB, 1 watt at 1 meter
- Crossover Frequency: 1.9 kHz

### SYSTEM COMPONENTS:

- Baffle/Grille: 441955-001
- Low Frequency Transducer: M115-8A, 380 mm (15 in.) cone transducer
- DC Resistance: 5.5 ohms
- High Frequency Transducer: 2414H-1 25.4 mm (1 in.) polymer diaphragm compression driver
- DC Resistance: 3.60 ohm  $\pm 0.2\%$

### SYSTEM COMPONENTS: (CONT'D)

- Input Connection: Parallel Neutrik NL4 1/4" combo connection
- Suspension / Mounting: 36 mm pole socket with stabilizing screw, 4 x M10 suspension points

### AURAL SWEEP TEST SPECIFICATIONS:

- A. System Aural Sweep Test: 7V Input, 20 Hz to 20 kHz  
Sweep duration: 5 seconds
- B. L.F. Aural Sweep Test: 6.0V Input, 20 Hz to 200 Hz
- C. H.F. Aural Sweep Test: 0.75V Input, 500 Hz to 1.5 kHz

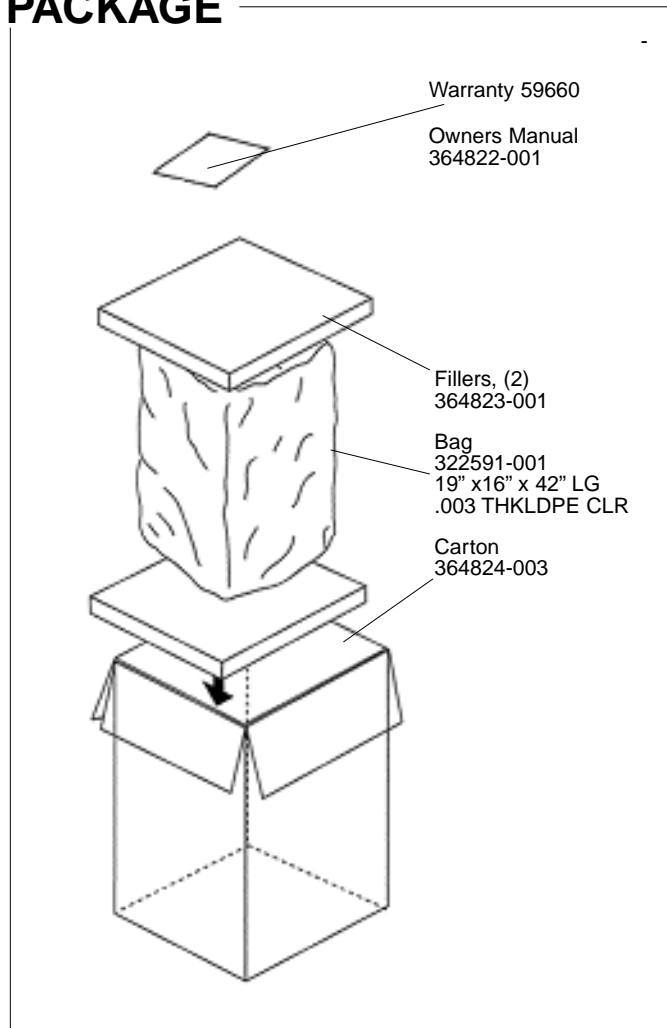
### PHYSICAL SPECIFICATIONS:

- Enclosure Dimensions: 685 x 438 x 366 D  
(27 x 17.3 x 14.4 in D)
- Shipping Weight: 33 lb (15 kg)

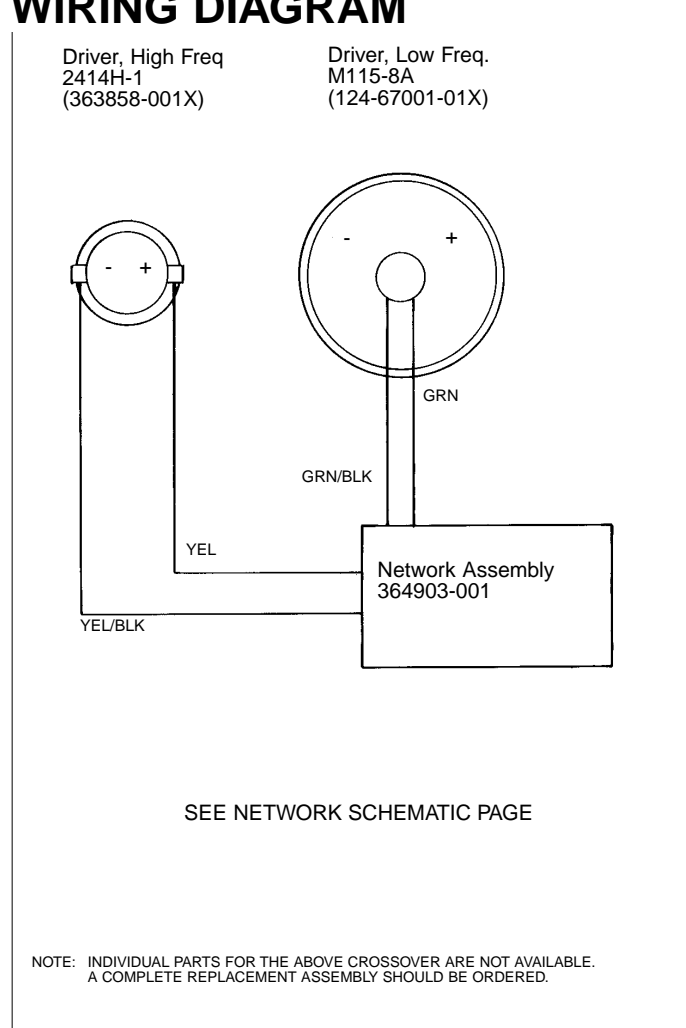
### WARRANTY INFORMATION:

- Refer to Warranty Statement packed with each product.

## PACKAGE

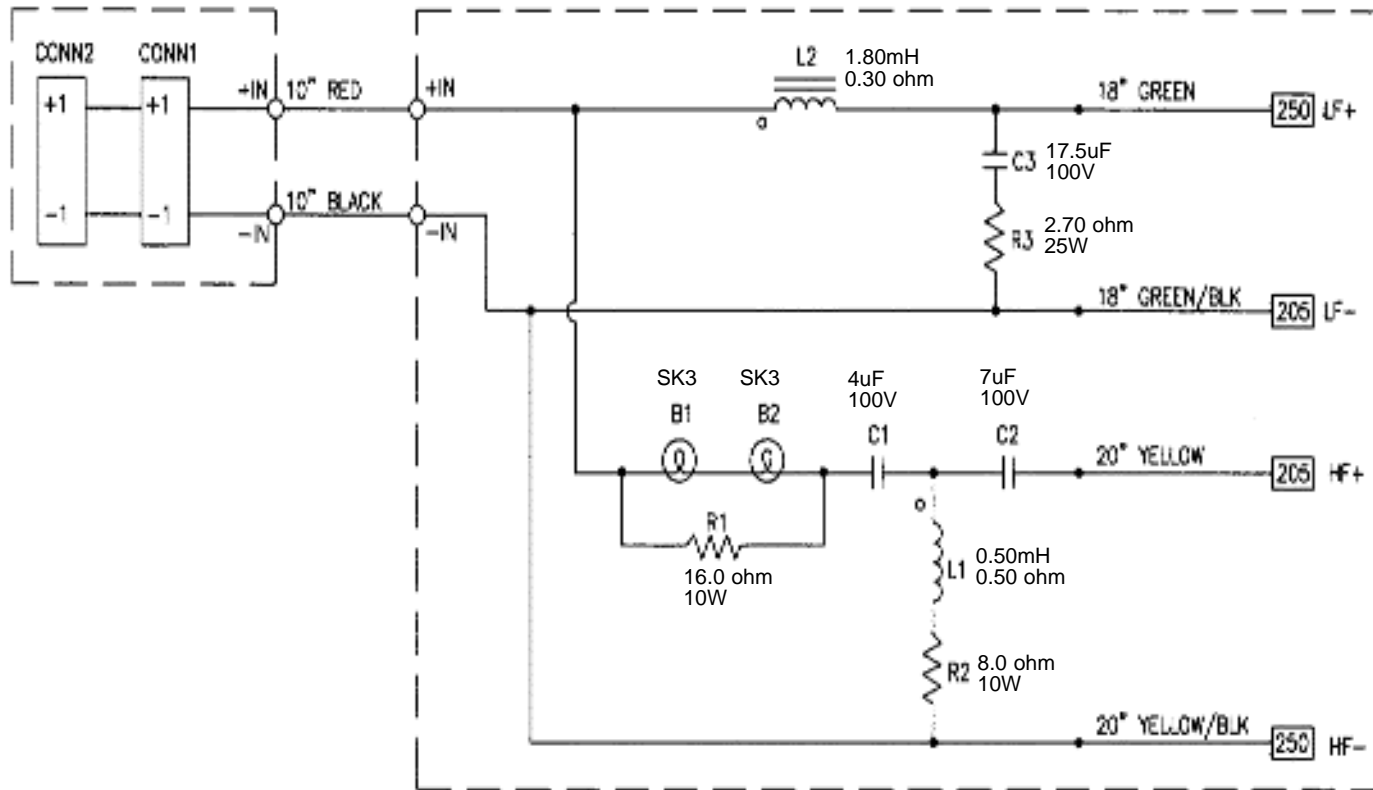


## WIRING DIAGRAM



# JBL EON305

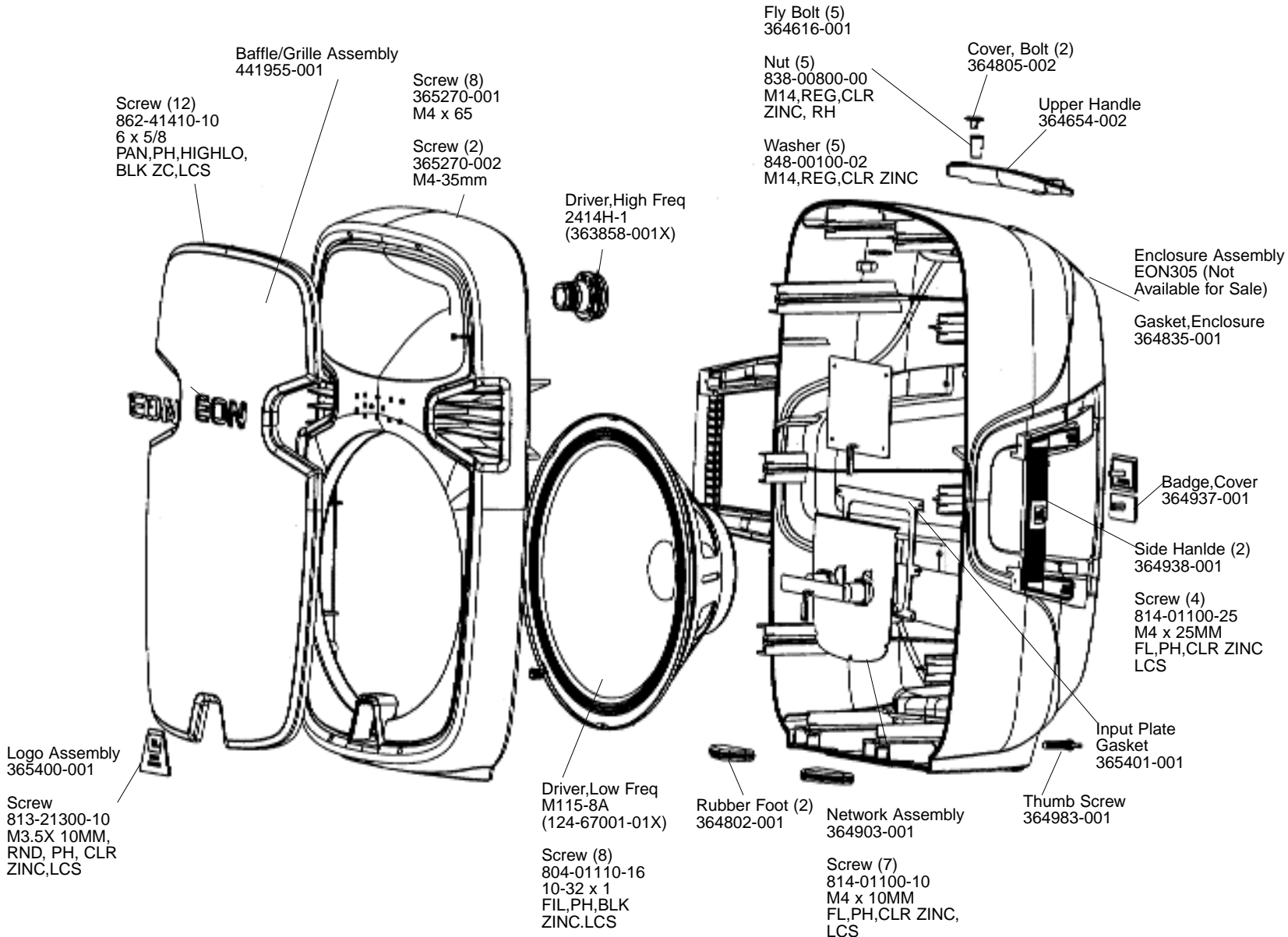
SCHEMATIC 364903-001



SCHEMATIC

# JBL EON305

## COMPONENT EXPLODED VIEW



JBL EON305