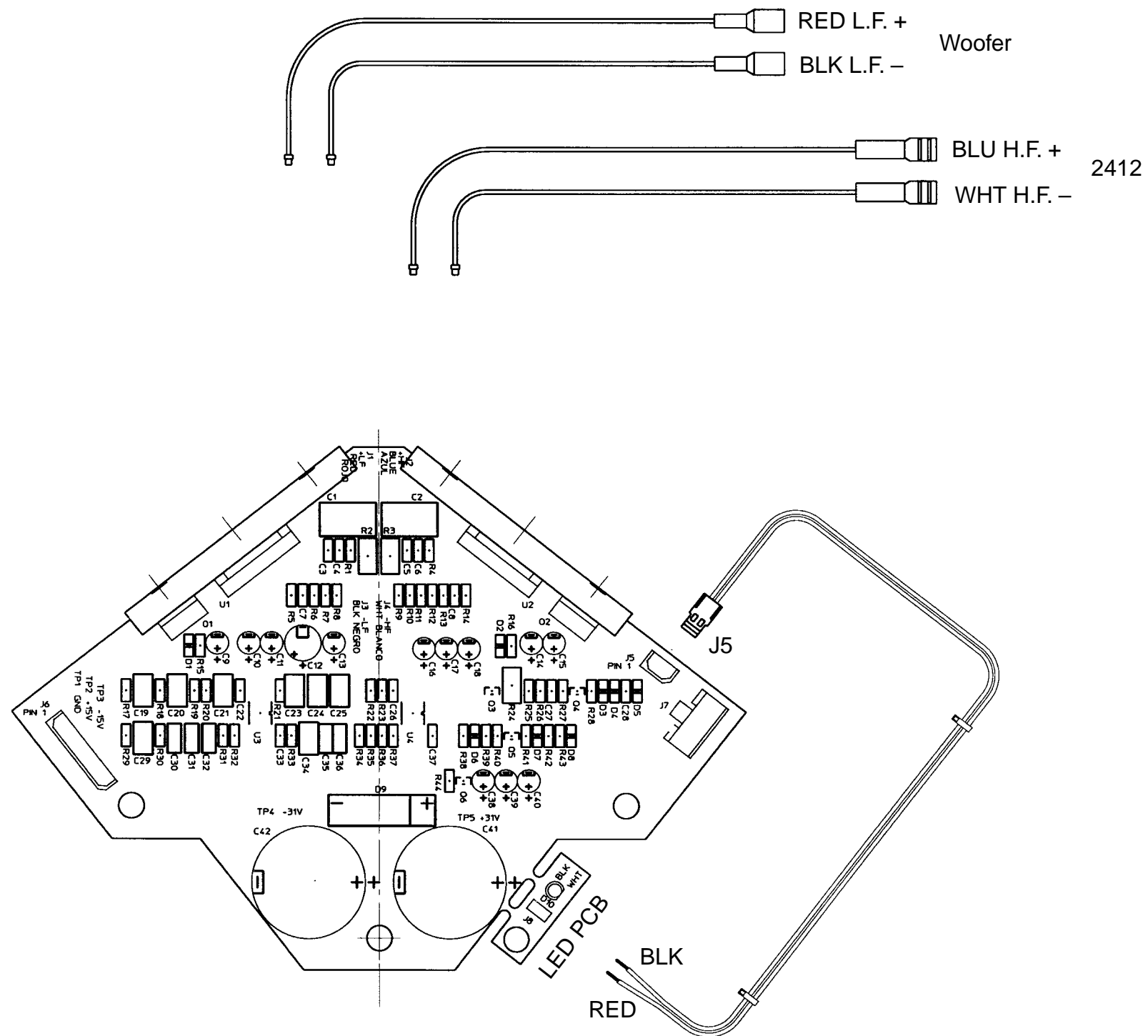


PCB Amp Assembly EON Power10

These Drawings and Specifications are the Property of JBL Professional Inc. They are Issued in Strict Confidence and Shall Not Be Reproduced, Copied, or Used as the Basis for Manufacturing or Sale of Apparatus Without Written Permission.

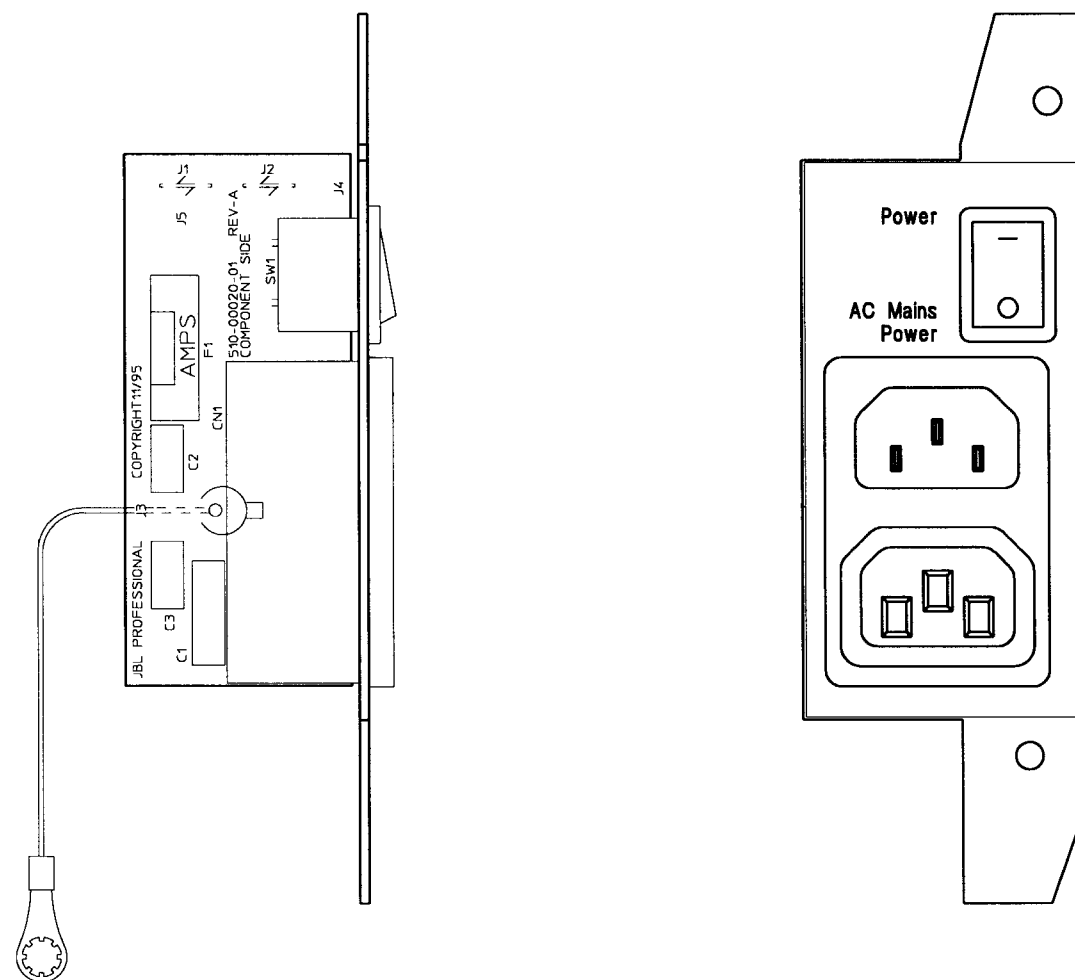


JBL PROFESSIONAL	JBL Professional A Harman International Company Northridge, California 91329, USA	
	DRAWING	
	513-00005	REV D

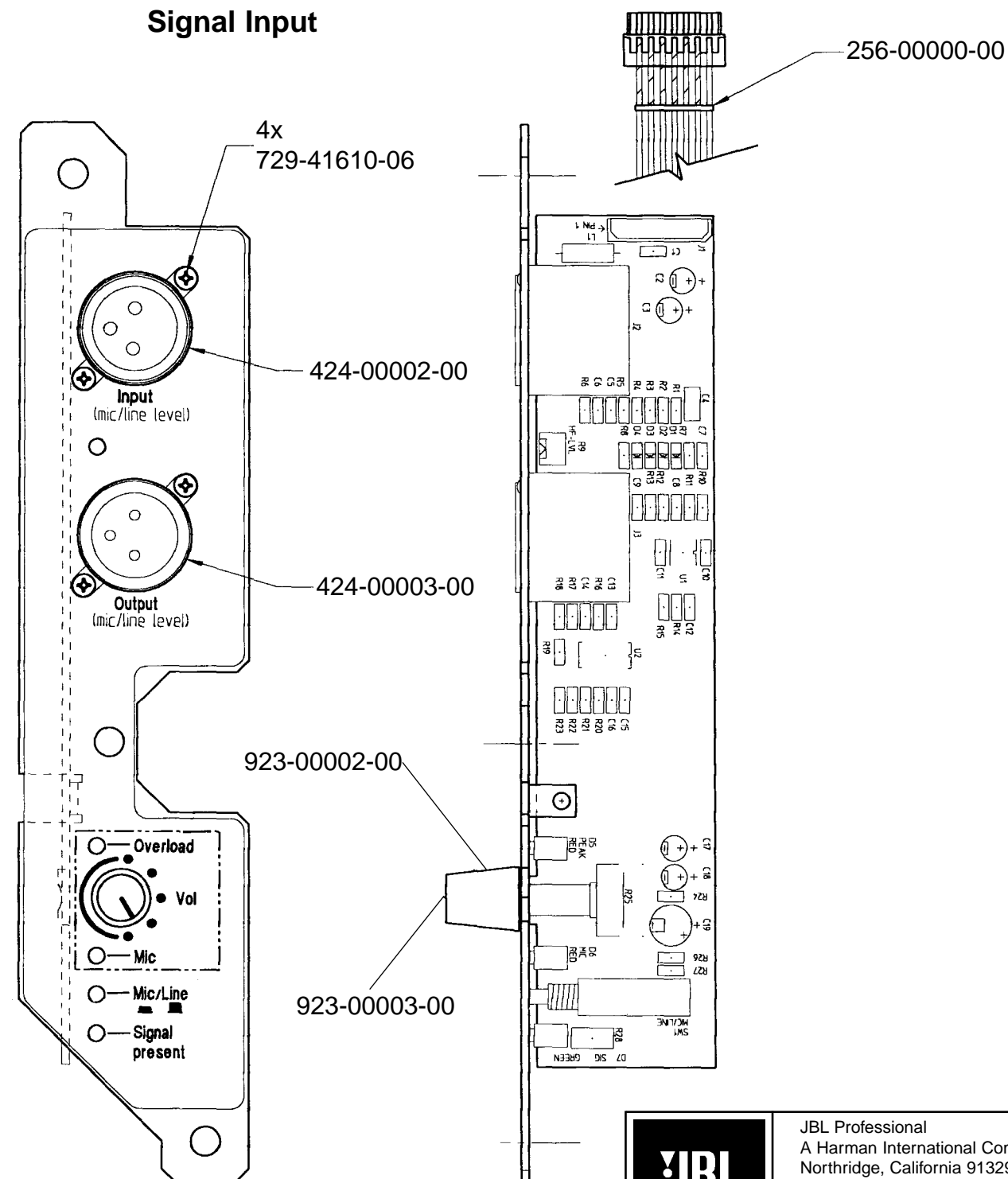
PCB AC Input and Signal Input Assemblies EON Power10

These Drawings and Specifications are the Property of JBL Professional Inc. They are Issued in Strict Confidence and Shall Not Be Reproduced, Copied, or Used as the Basis for Manufacturing or Sale of Apparatus Without Written Permission.

AC Input



Signal Input



JBL PROFESSIONAL	JBL Professional A Harman International Company Northridge, California 91329, USA	
	DRAWING	
	513-00020	REV C

JBL PROFESSIONAL	JBL Professional A Harman International Company Northridge, California 91329, USA	
	DRAWING	
	513-00004	REV C