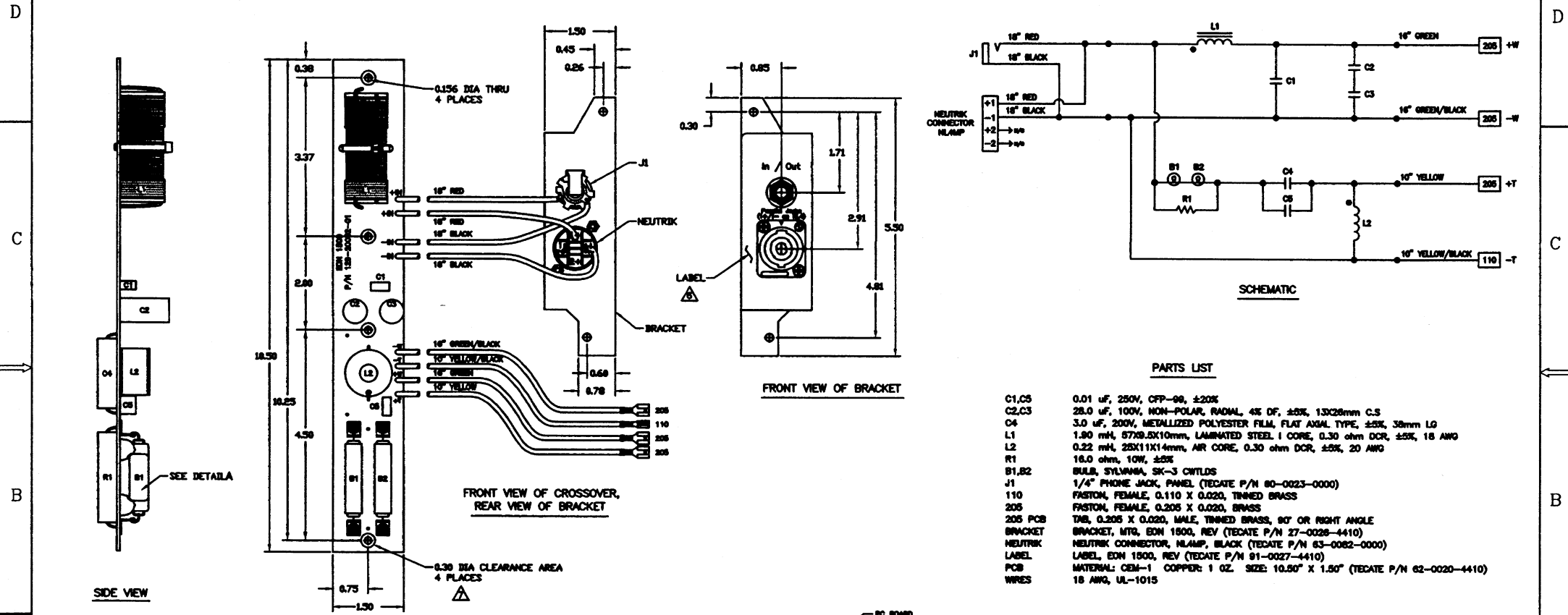


THESE DRAWINGS AND SPECIFICATIONS ARE THE PROPERTY OF JBL INCORPORATED. THEY ARE ISSUED IN STRICT CONFIDENCE AND SHALL NOT BE REPRODUCED OR USED AS THE BASIS FOR MANUFACTURE OR APPARATUS WITHOUT WRITTEN PERMISSION.

PART NO.	REV	DESCRIPTION	REMARKS
129-20052-00	BBS	BBS	
129-20052-01	B	NETWORK ASSY, EDN1500	MATCH TECATE DVG 10-0025-4410 REV B

CHG	LTR	DESCRIPTION	DRFT	D.C.	DATE	APPR
102921	D	TO MATCH TO THE TECATE REV	R,G	M,H	4/13/99	G,F
102924	E	RELEASE -01, OBS THE -00	R,G			

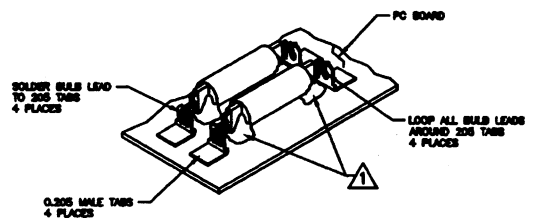
102981
8/4/99



UNCONTROLLED COPY

- △ A 0.30" DIA CLEARANCE AREA IS REQUIRED AROUND THE PC BOARD MOUNTING HOLES (4 PLACES).
- △ PICTORIAL DRAWING FOR LABEL IS FOR REFERENCE ONLY. DO NOT USE THIS DRAWING FOR ARTWORK. (ARTWORK TO BE SUPPLIED BY CUSTOMER)
- SECURE L1 TO THE PC BOARD WITH A 3.6" CABLE TIE.
 - SECURE ALL INDUCTORS, CAPACITOR (C4) AND RESISTOR (R1) TO THE PC BOARD WITH RTV SILICONE.
 - SECURE CAPACITORS (C1,C2,C3,C5) TO THE PC BOARD WITH EPOXY.
 - % DENOTES START LEAD OF INDUCTOR.
 - ALL COMPONENTS TO BE TESTED @ 1 KHz., UNLESS OTHERWISE SPECIFIED.

NOTES: (UNLESS OTHERWISE SPECIFIED)



MODEL	THIRD ANGLE PROJECTION	DESIGNER	DATE	REV
EDN1500		R.GRIFFIN	8/4/99	D
		JBL PROFESSIONAL A Harman International Company Northridge, California 91329, U.S.A.		
		NETWORK ASSY		
		DRAWING NO. D 129-20052		
		SHEET 1 of 1		