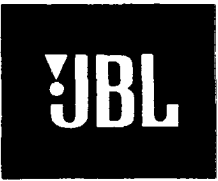


Technical Manual

JBL P725AP COMPACT BI-RADIAL™ SPEAKER SYSTEM



SPECIFICATIONS

ACOUSTIC & ELECTRICAL SPECIFICATIONS:

- Nominal Impedance: Passiv: 8 ohms
Active: LF 8 ohms, HF 8 ohms
- Power Rating: Passiv: 600W IEC
HF 100W continuous program above 1.2 kHz
LF 600W AES
- Frequency Response: 50 Hz - 20 kHz
- Sensitivity: 95 dB (1 m, 2.83 V)*
- Crossover Frequencies: Passiv: 1200 Hz
Active: C 236

SYSTEM COMPONENTS:

- Cabinet: CP725AP
- Grille: CP725AP
- Low Frequency Transducer: 300 m (12 in) Cone Transducer (2206H)
- DC Resistance: 5.3 ohms ± 10% Aluminium Wire
- High Frequency Transducer: 25 mm (1 in) Pure Titanium Diaphragm Compression Driver (2426 H)

- DC Resistance: 3.2 ohms ± 8% Aluminium Wire
- Crossover Network: HF Network: 270643
LF Network: 270678

PHYSICAL SPECIFICATIONS:

- Enclosure Dimensions: 646 mm x 362 mm x 356 mm
(25 3/8 x 14 1/4 x 14 in)
- Shipping Weight: 29.5 kg (65 IBS)

NEUTRIK CONNTECOT

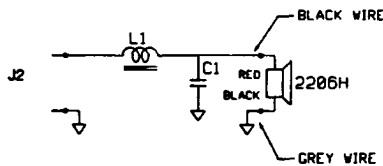
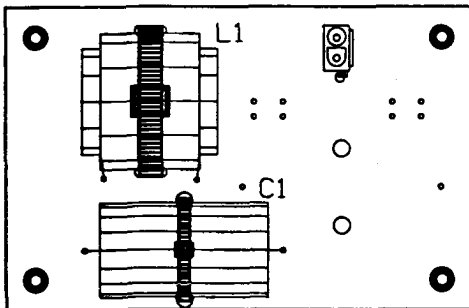
- Pins 1 ± = Loophthrough
- Pins 2 ± = Input FR (LF Activ)
- Pins 3 ± = Input HF (Activ mode)
- Pins 4 ± = Loophthrough

How to modify to Active version.

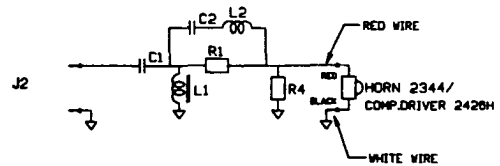
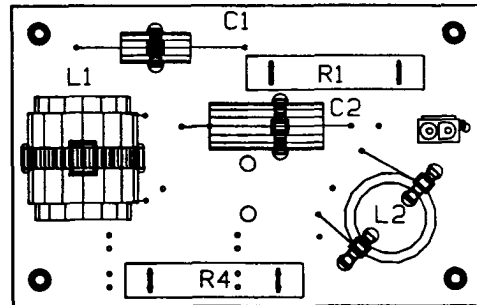
Remove red/black input wire from input pc board. Remove wires to Transducers from the passiv pc boards. Mount the HF wire (red/wht) to J3, and the LF (grey/blk) to J2.

⊕ Denotes outward cone movement with positive voltage to pin 2 + (passiv mode), and pin 2 + LF and pin 3 + HF IN (Active mode)

WIRING DIAGRAM



- C1 Capacitor 33 uF / 250 V 933619
- L1 Inductor 3.2 mH 01.2 SP-FL 965571



- C1 Capacitor 4.7 uF / 250 V 963608
- C2 Capacitor 8.0 uF / 250 V 963605
- R1 Resistor 20 ohm / 20 W 964507
- R4 Resistor 6.8 ohm / 20 W 964503
- L1 Inductor 1.6 mH 01.2 SP-FL 965524
- L2 Inductor 0.025 mH ø1.0 air 965119

PACKAGE

CARTON
INCLUDING ENDPADS
898640

JBL P725AP